

VARIANTE 2 PIANO PARTICOLAREGGIATO COMPARTO "A1" EX-NUOVA SILAN

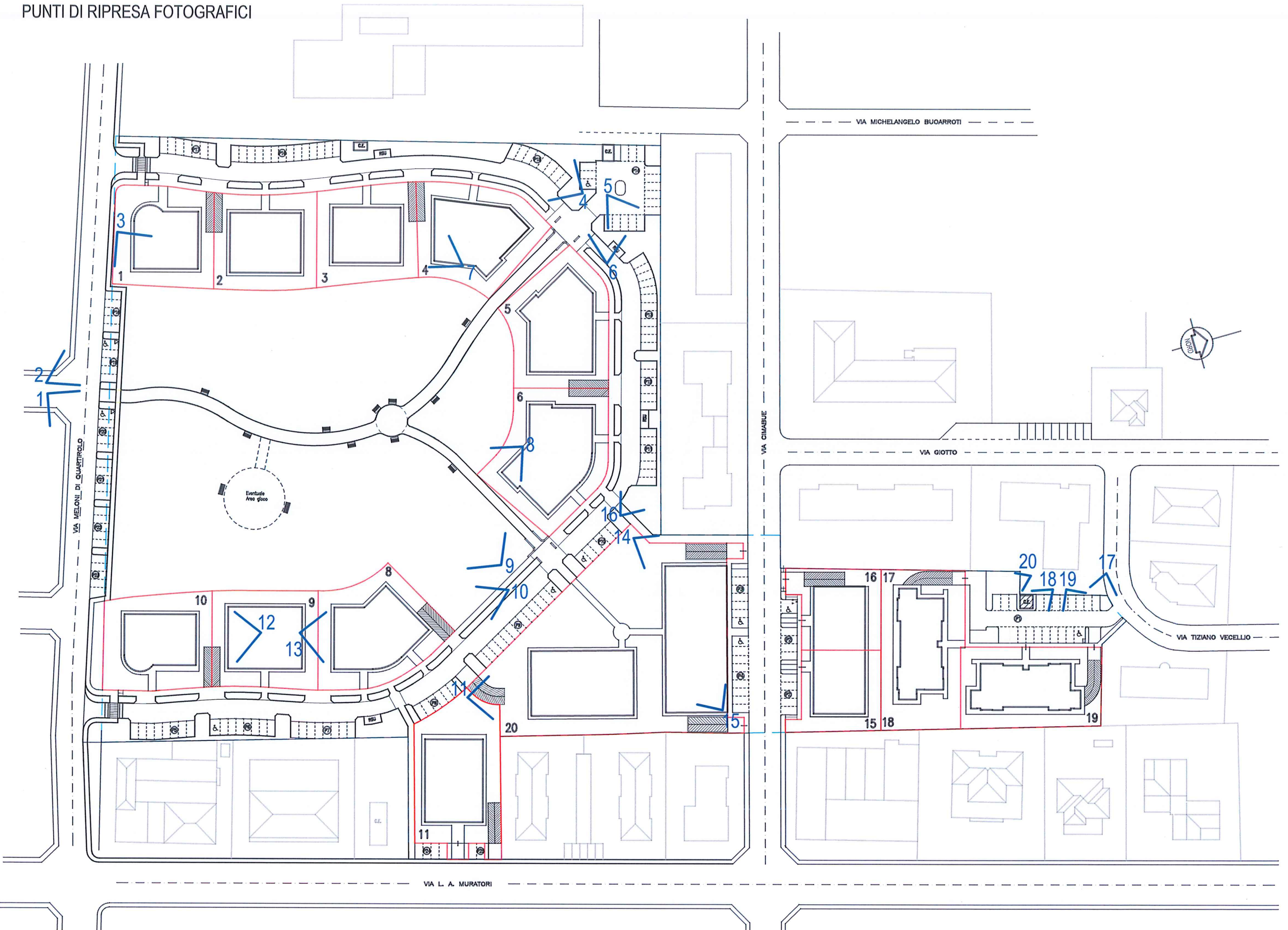
RELAZIONE FOTOGRAFICA

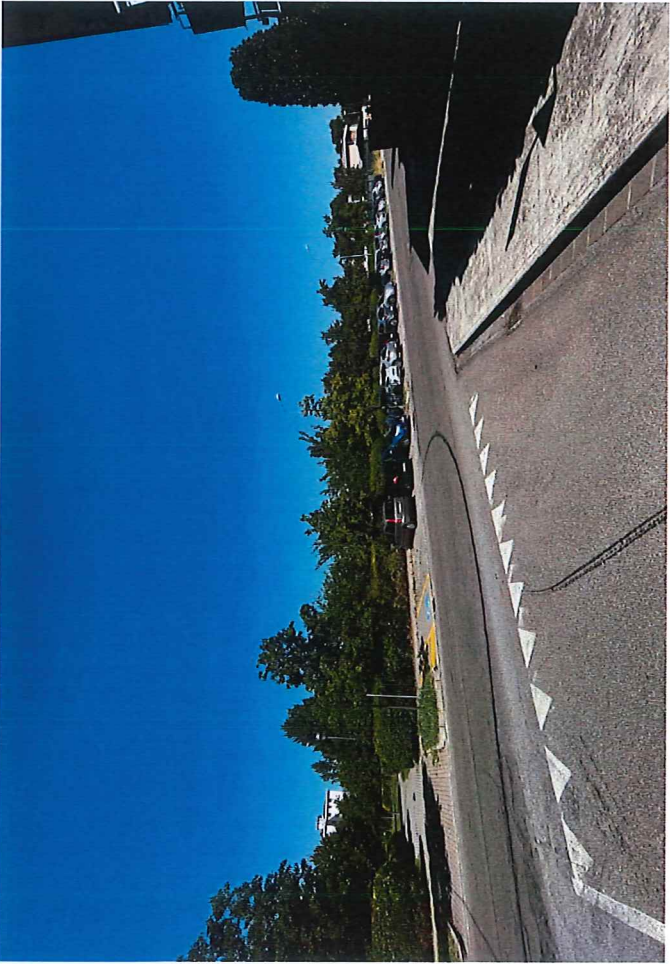


INGEGNERE MARC'AURELIO SANTI

Via C. Cattaneo, 17, 41012 Carpi – tel 059/6229007 fax 059/6229008
Email ingsanti@ingsanticarpi.eu

PUNTI DI RIPRESA FOTOGRAFICI

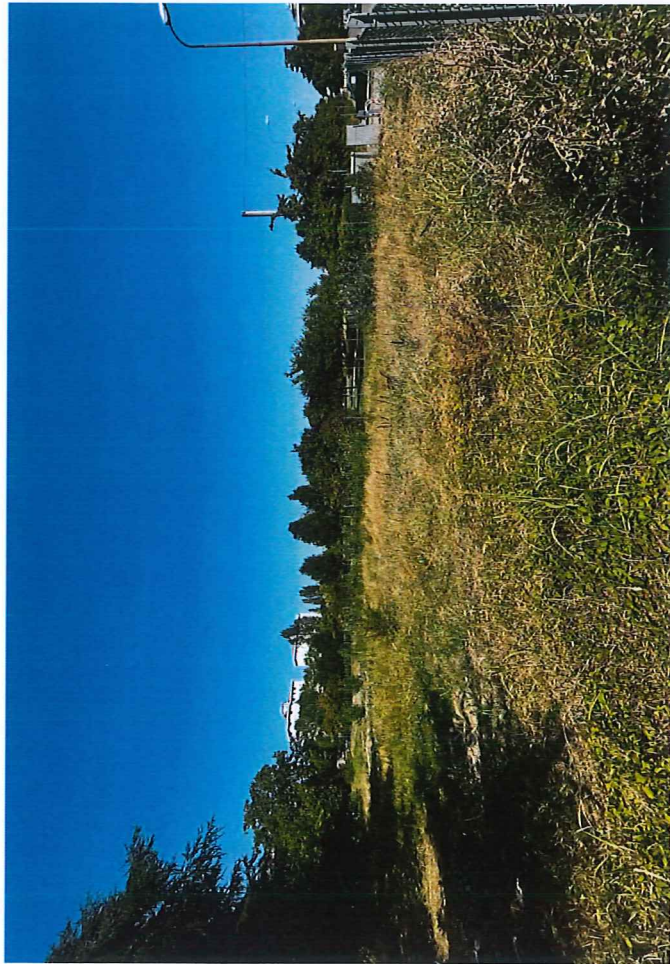




1



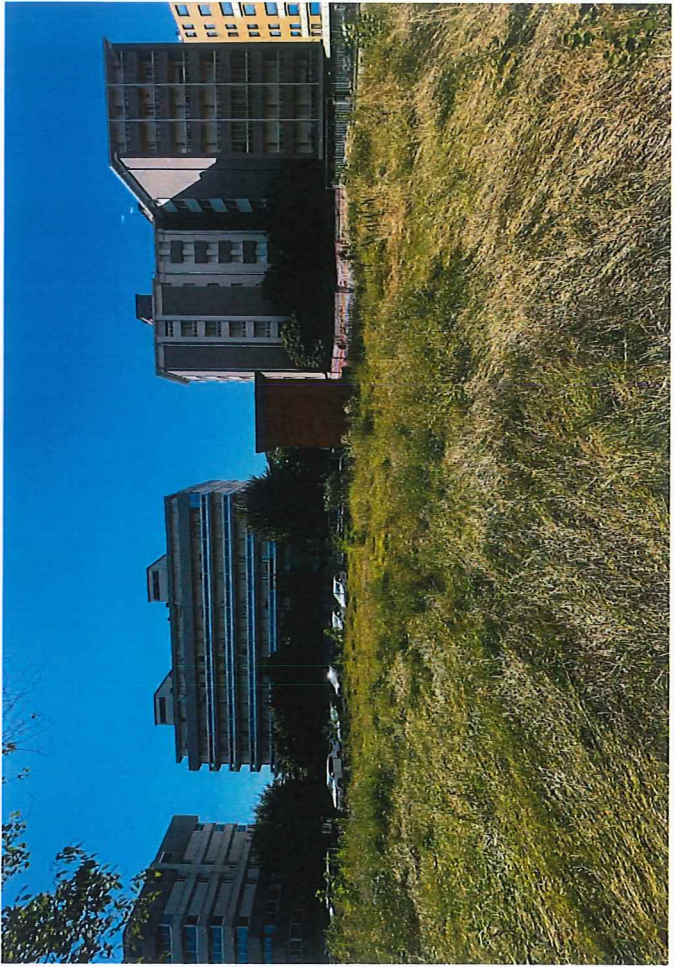
2



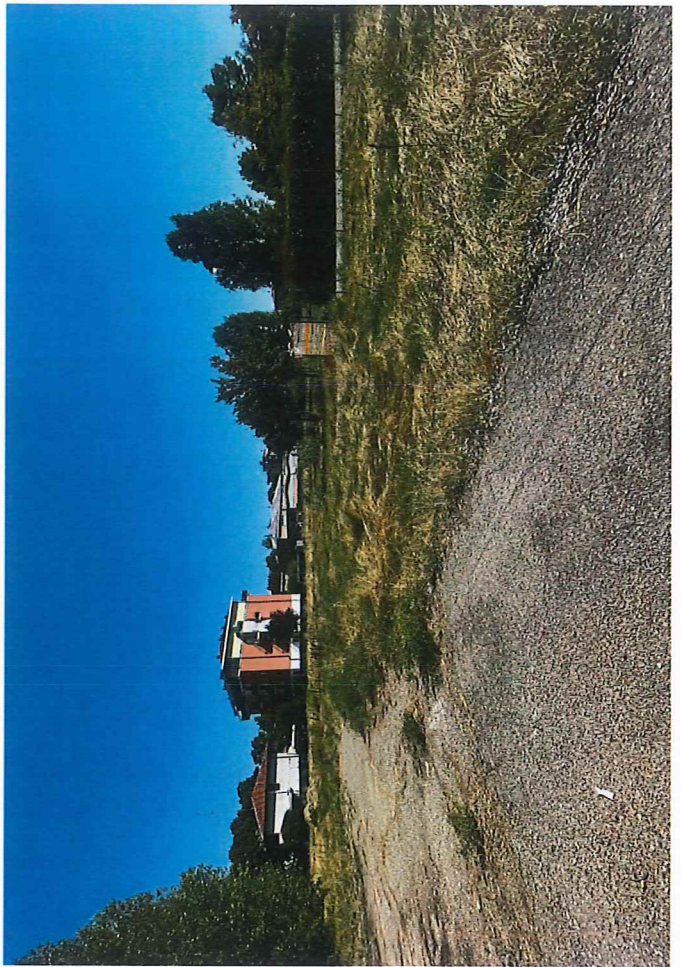
3



4



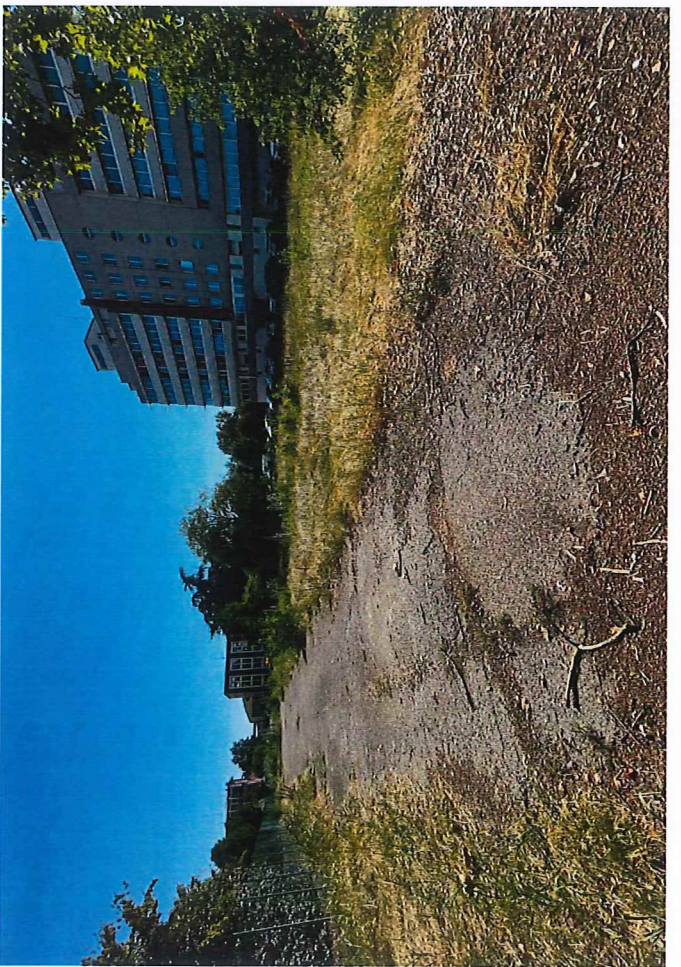
6



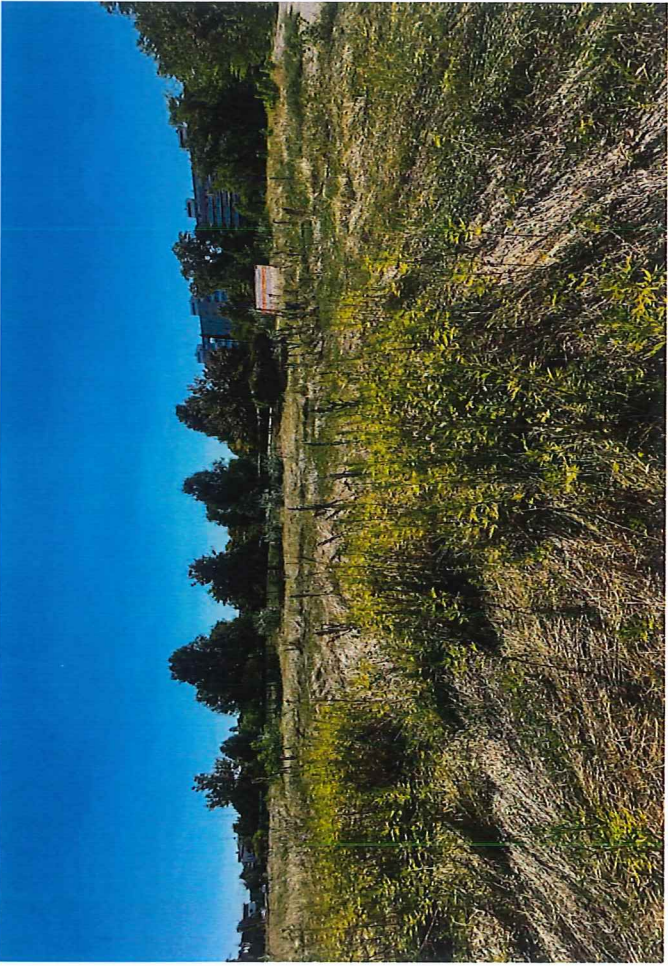
8



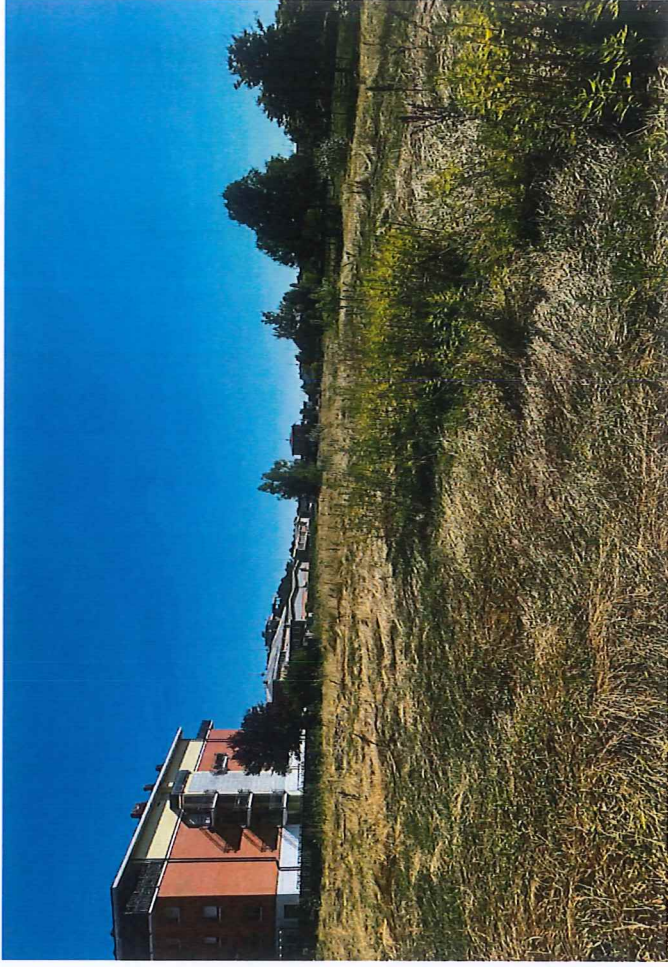
5



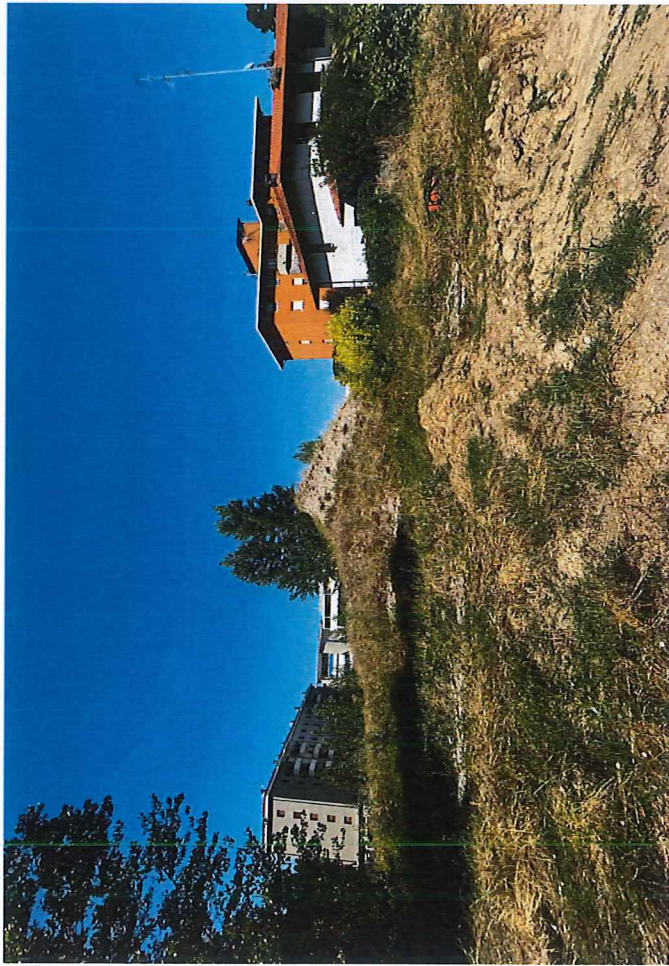
7



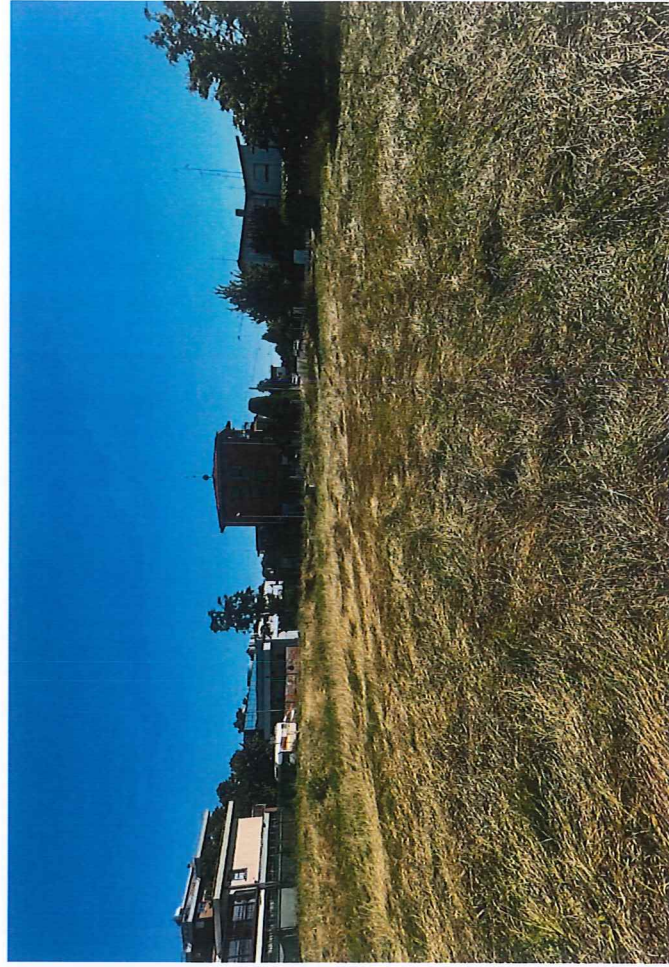
9



10



11



12



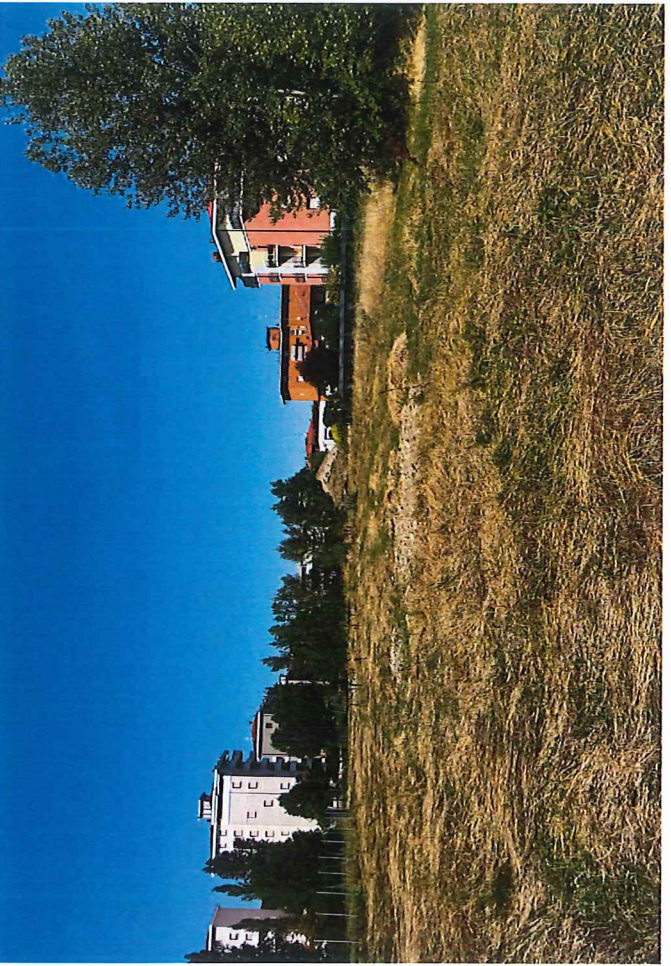
16



15



14



13



17



18



19



20