

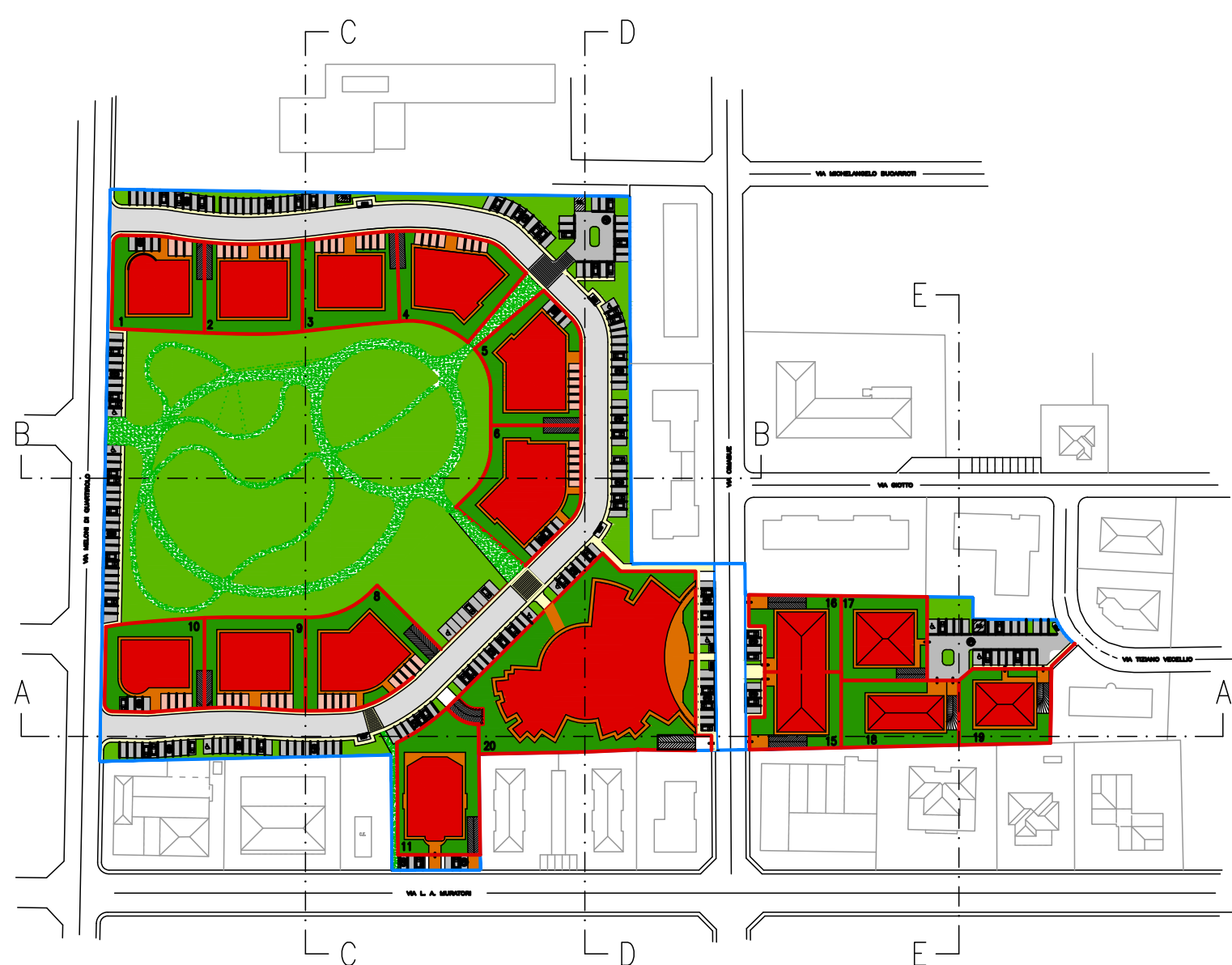
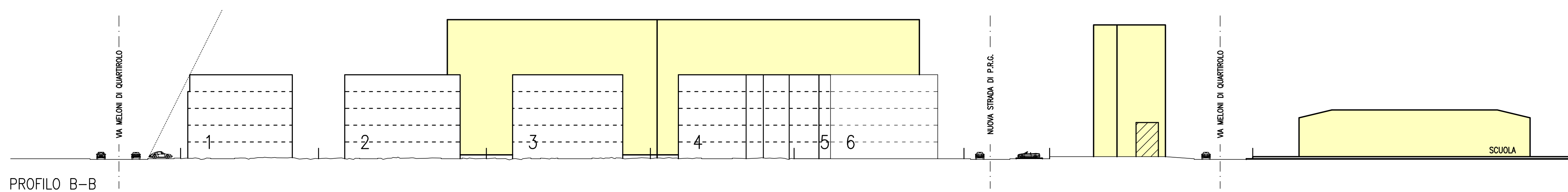
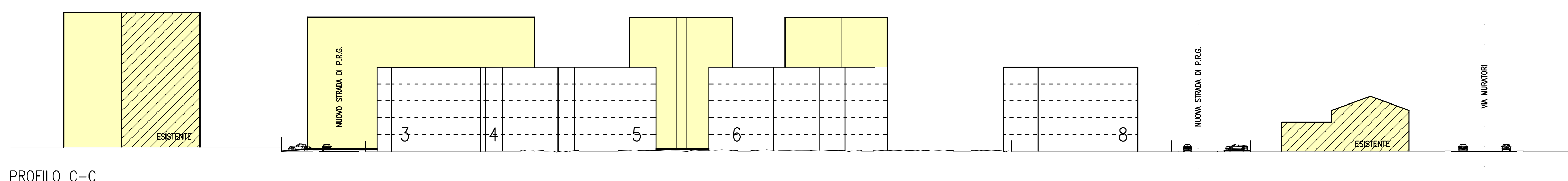
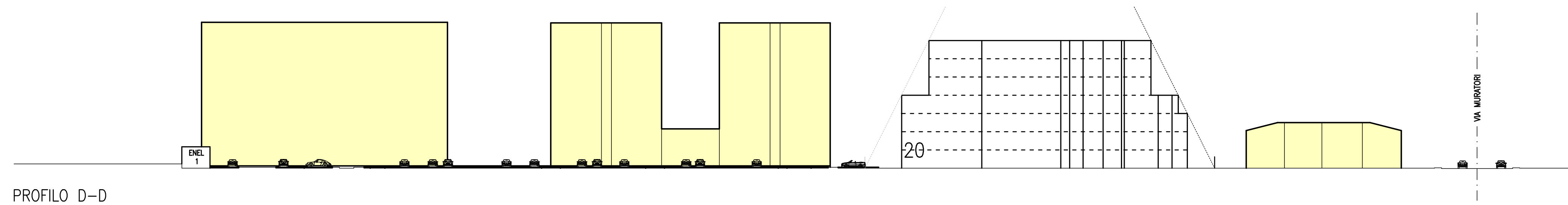
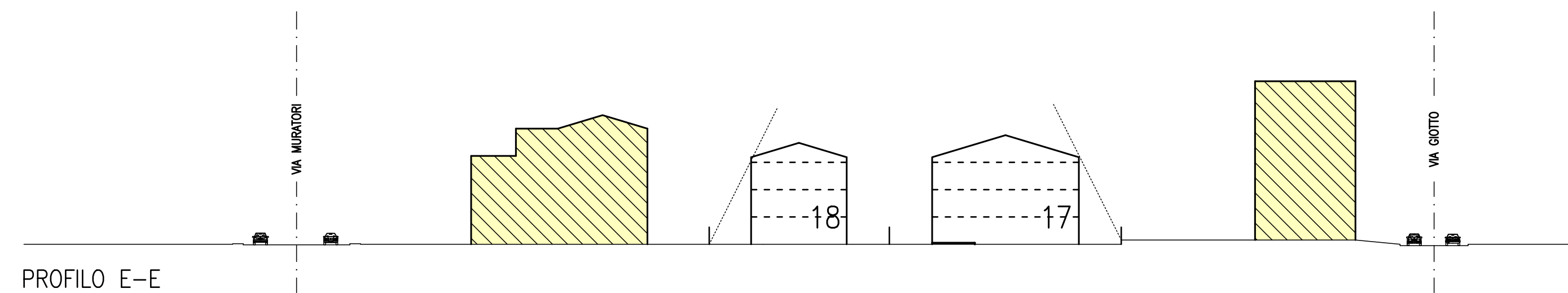
**Marc'Aurelio
Santi
Ingegnere**

Comittente: **ABITCOOP soc.cop—ANDRIA soc.cop.arl
soc. EFFEMME COSTRUZIONI s.r.l.**
 Oggetto: **VARIANTE 2 PIANO PARTICOLAREGGIATO
COMPARTO "A1" EX—NUOVA SILAN**
 CARPI
 Ubicazione: **VIA MELONI DI QUARTIROLO, 1**
 Tavola: **PROFILI ALTIMETRICI**
 Note: **APPROVATO**

6
 Rapp.: 1:500
 Data: 28.07.22
 Agg:

Studio Tecnico - Via C. Cattaneo n. 17 - Tel. 059/622.90.07 - Fax 059/622.09.99 - 41012 Carpi (MO) - E-Mail: ing.santi@inganticarpi.eu

FABBRICATI ESISTENTI



RAPP. 1:2000

