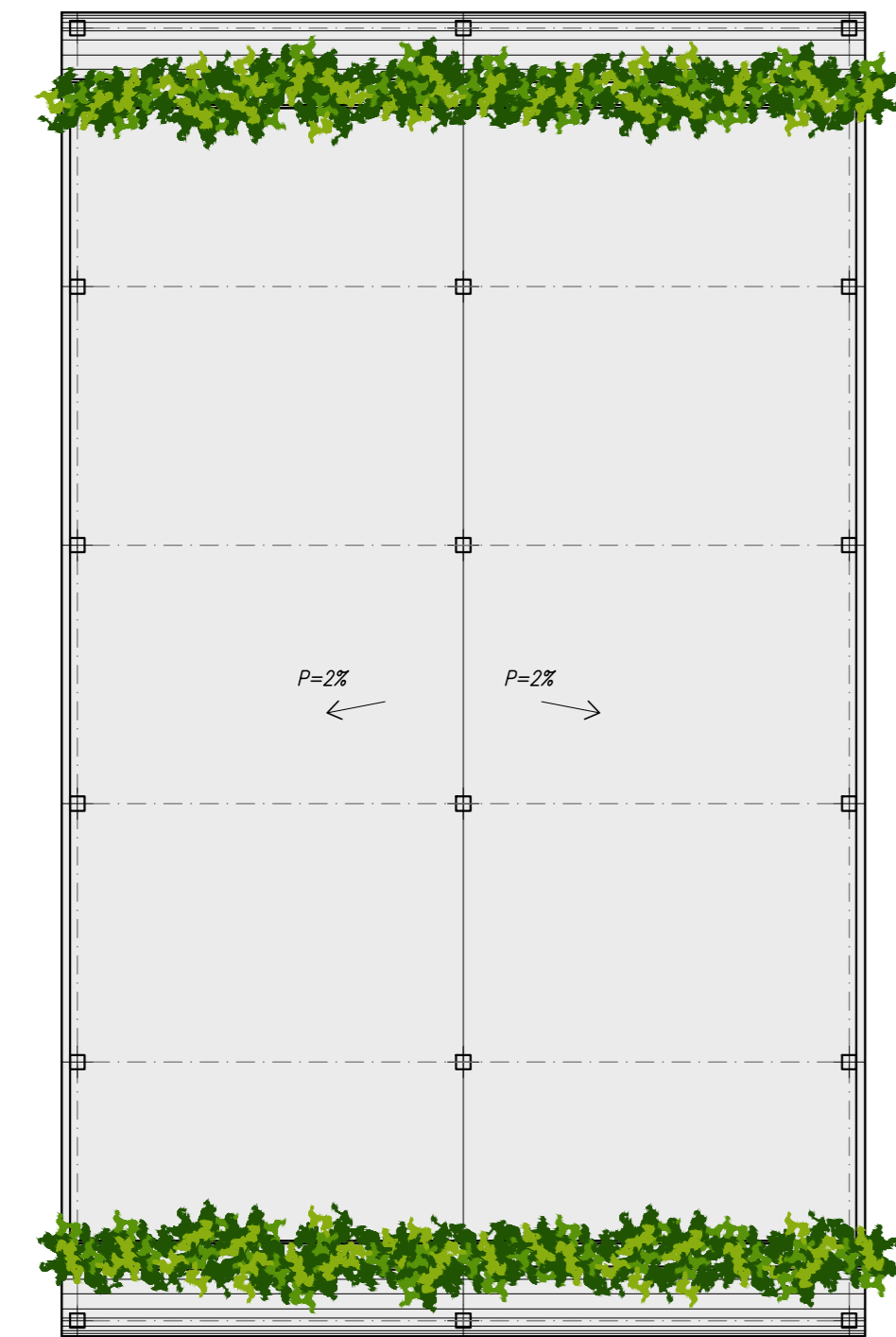
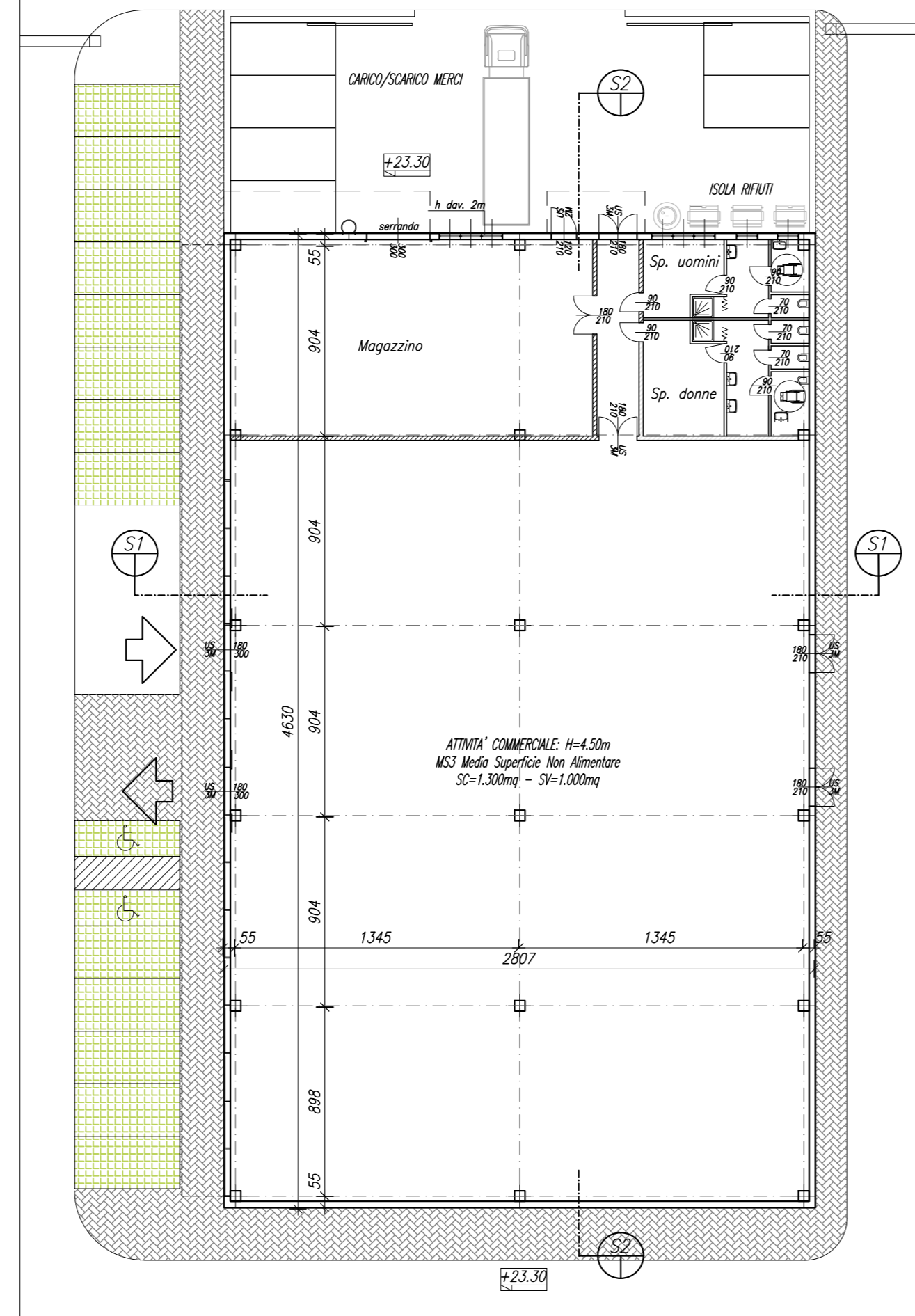


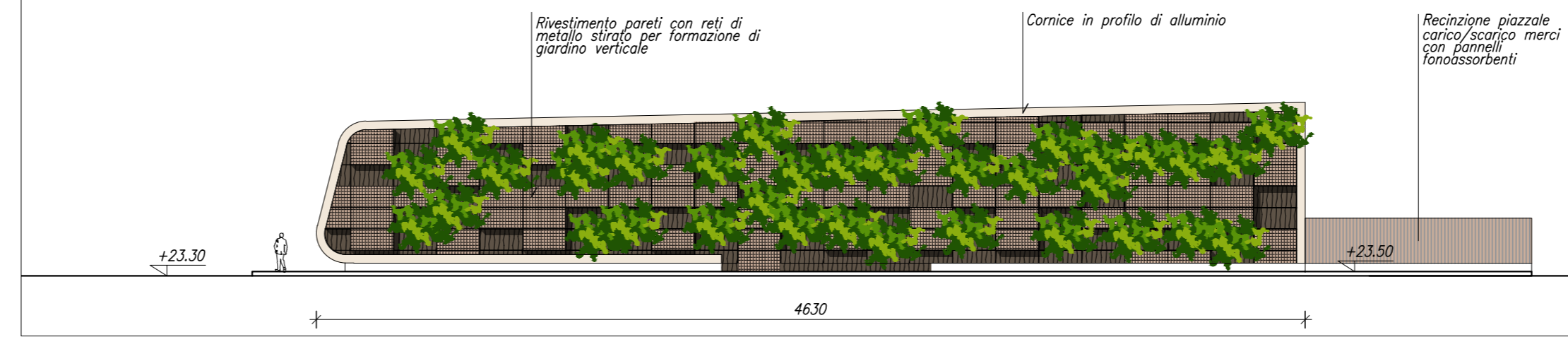
PIANTA COPERTURA - scala 1:250



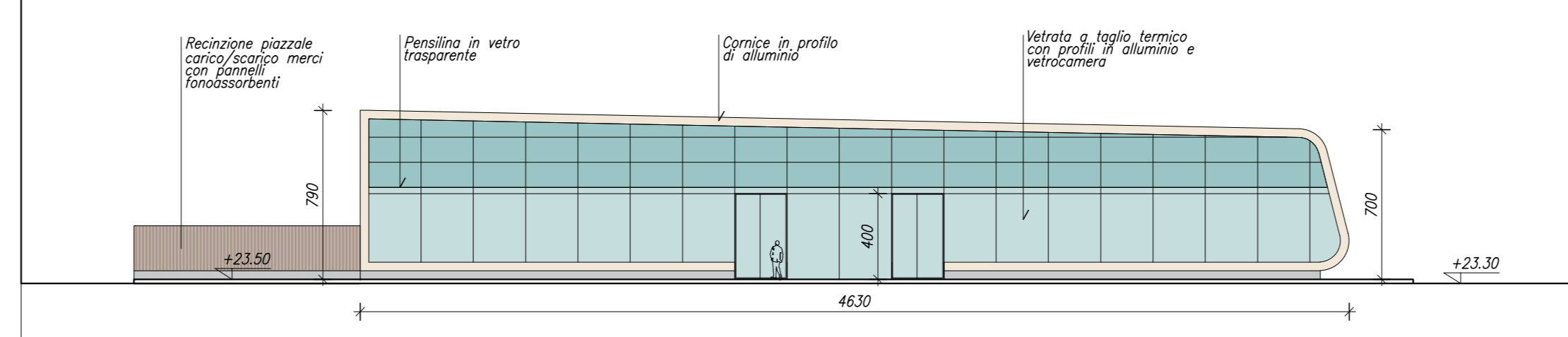
PIANTA PIANO TERRA - scala 1:250



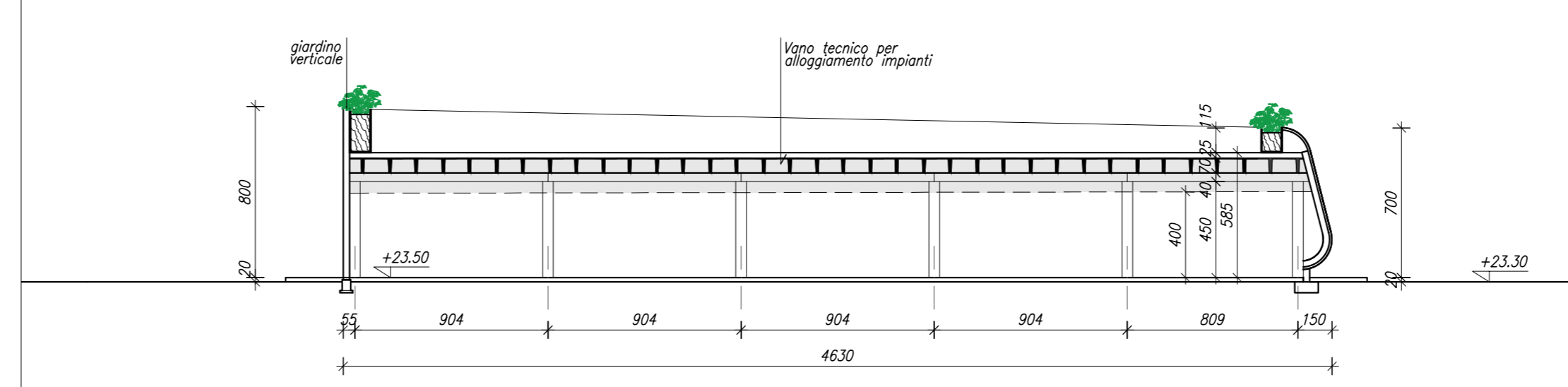
PROSPETTO NORD - scala 1:250



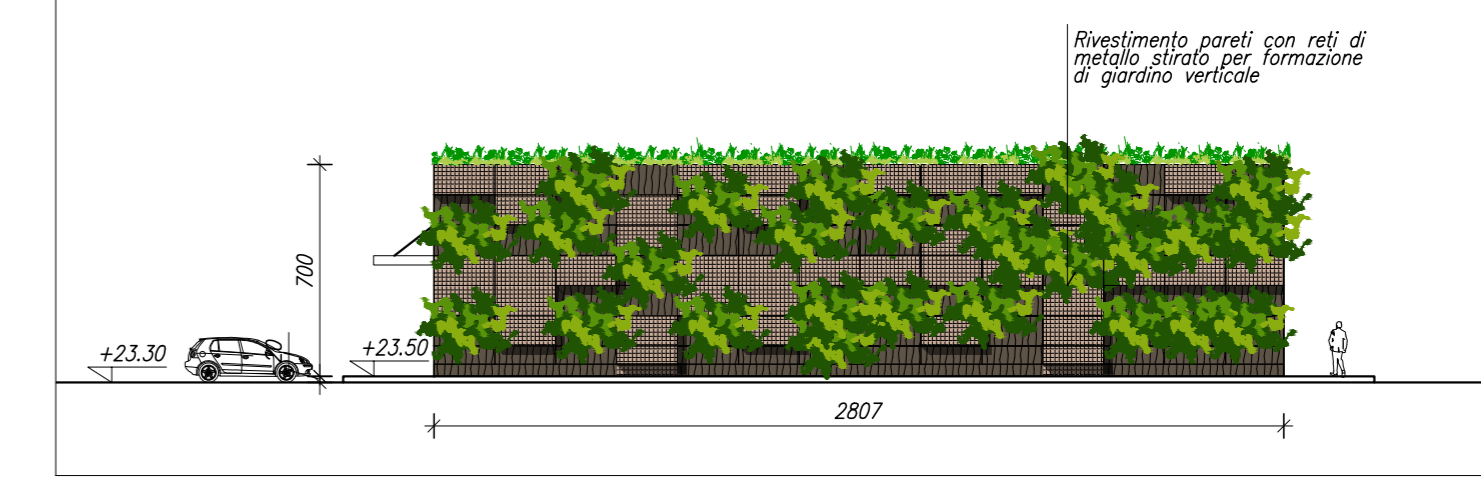
PROSPETTO SUD - scala 1:250



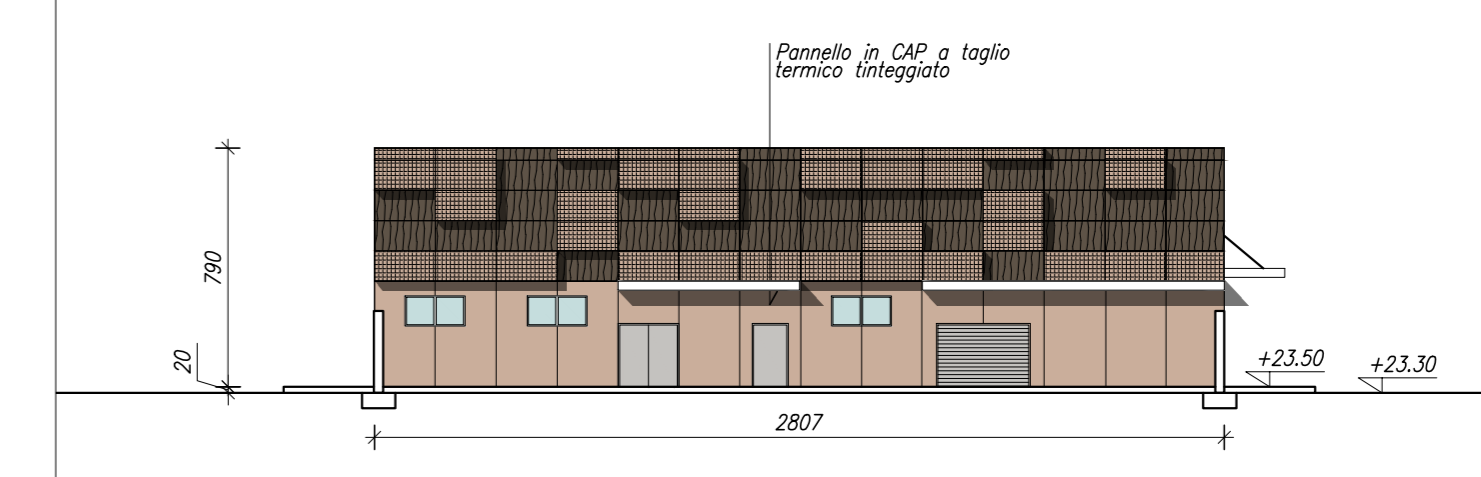
SEZIONE S2 - scala 1:250



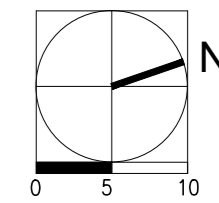
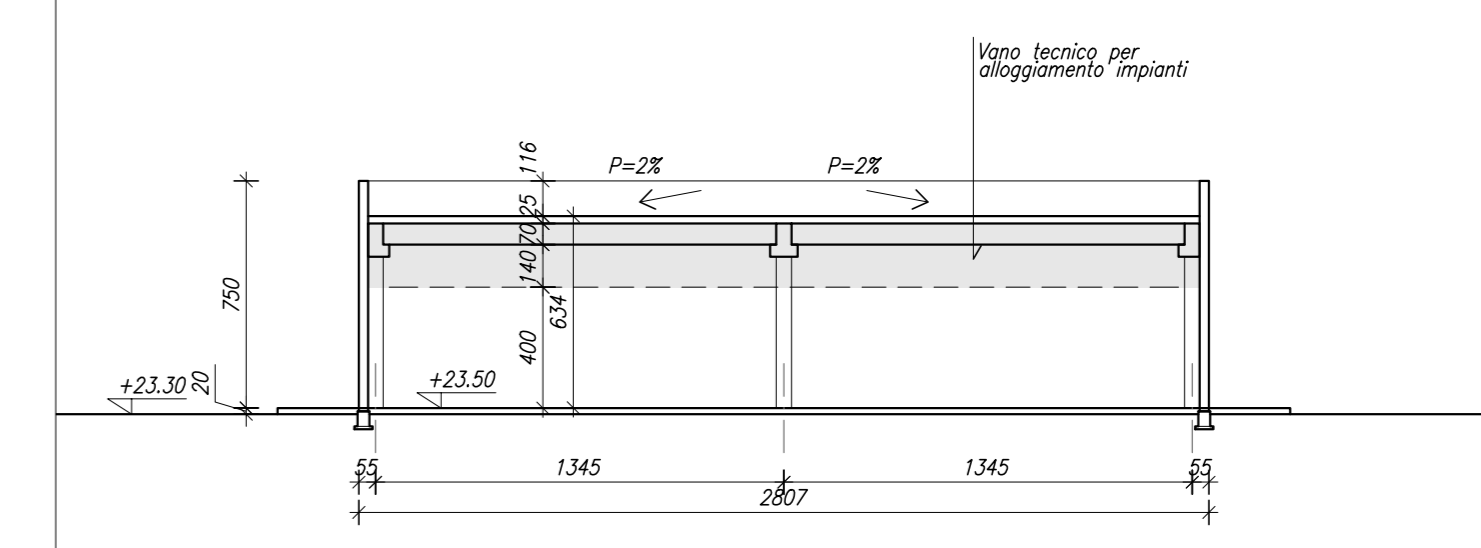
PROSPETTO EST - scala 1:250



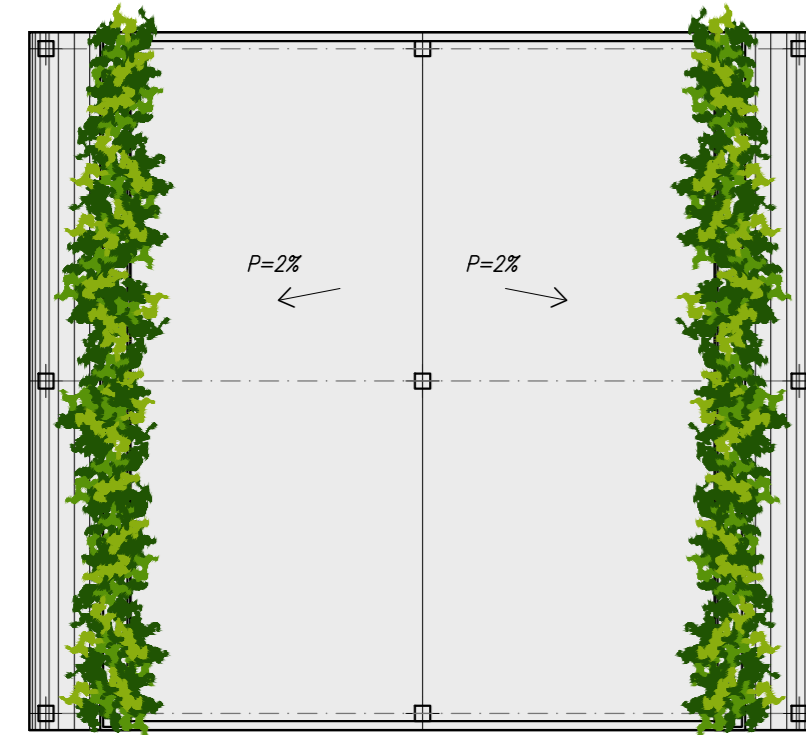
PROSPETTO OVEST - scala 1:250



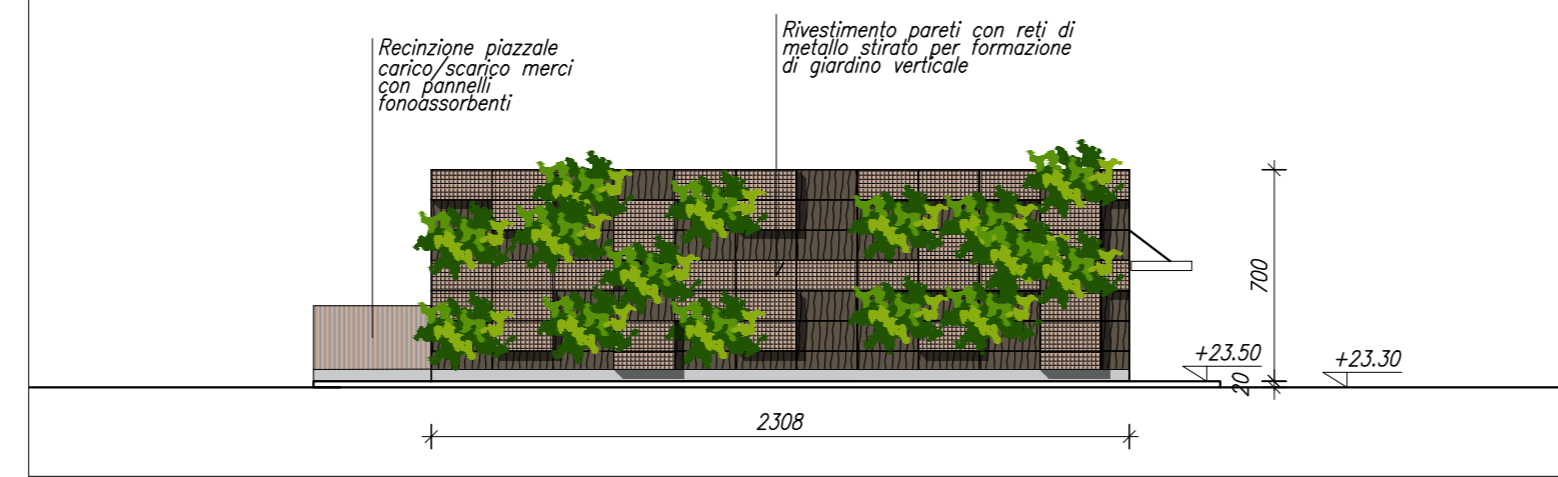
SEZIONE S1 - scala 1:250



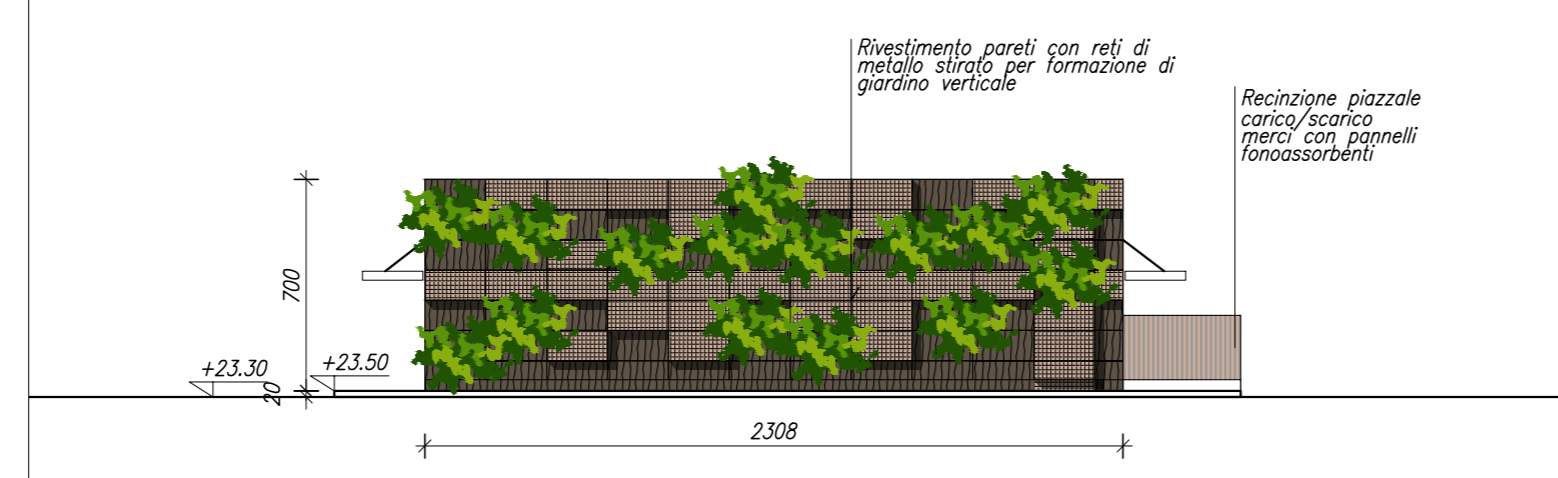
PIANTA COPERTURA - scala 1:250



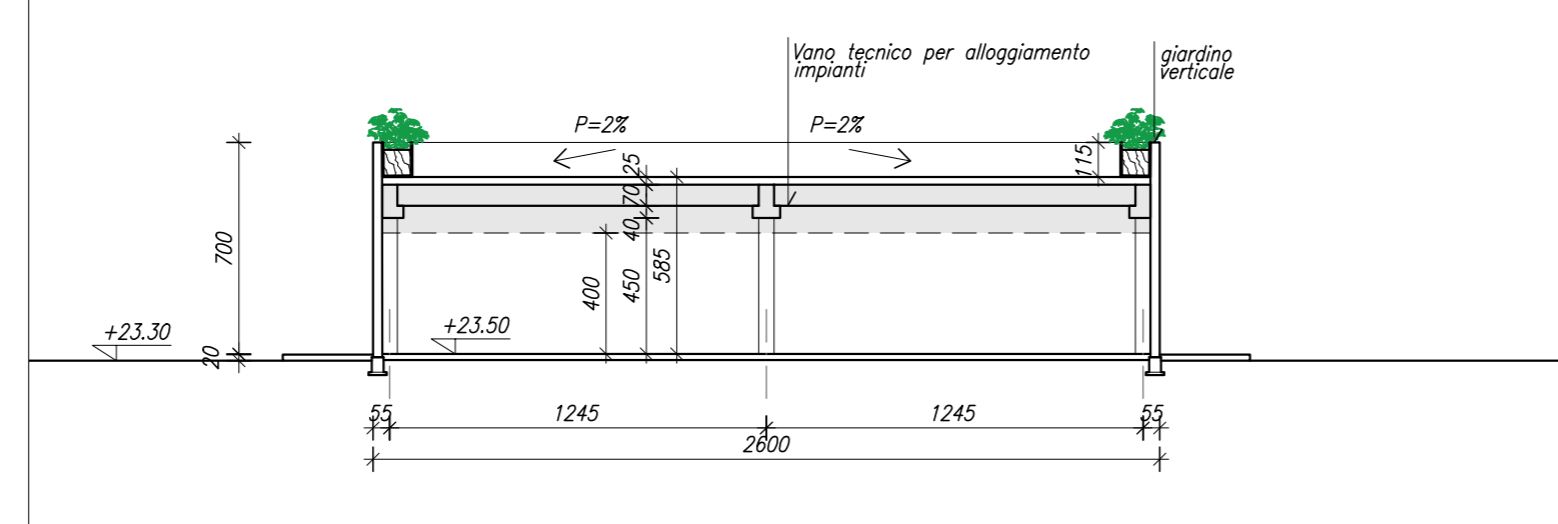
PROSPETTO SUD - scala 1:250



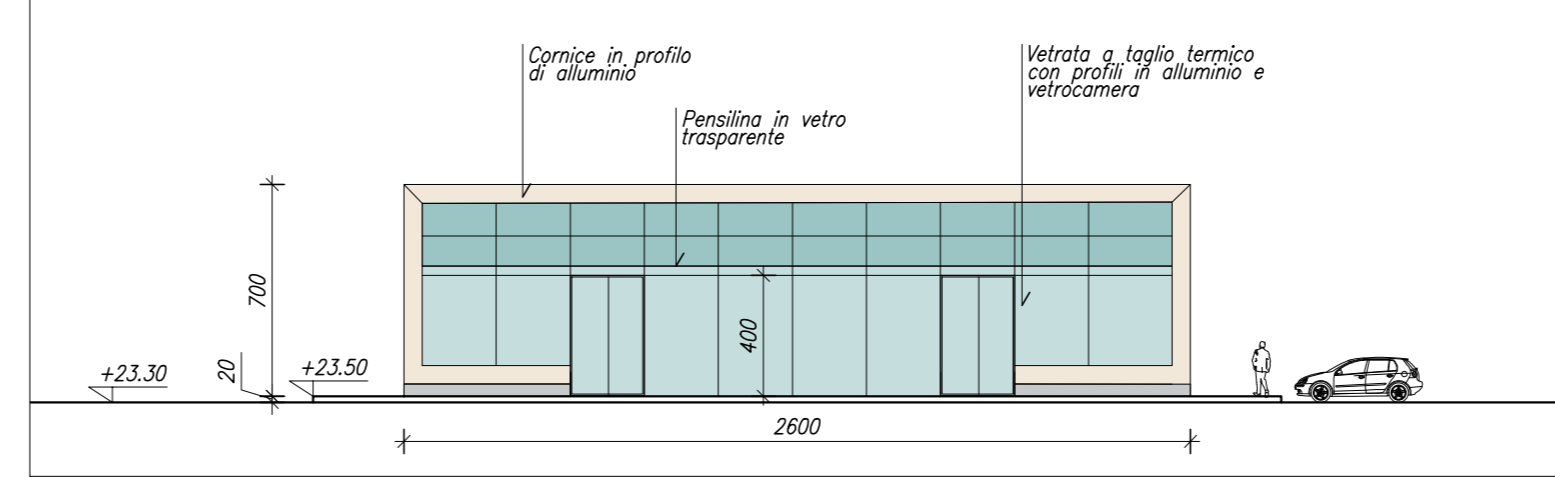
PROSPETTO NORD - scala 1:250



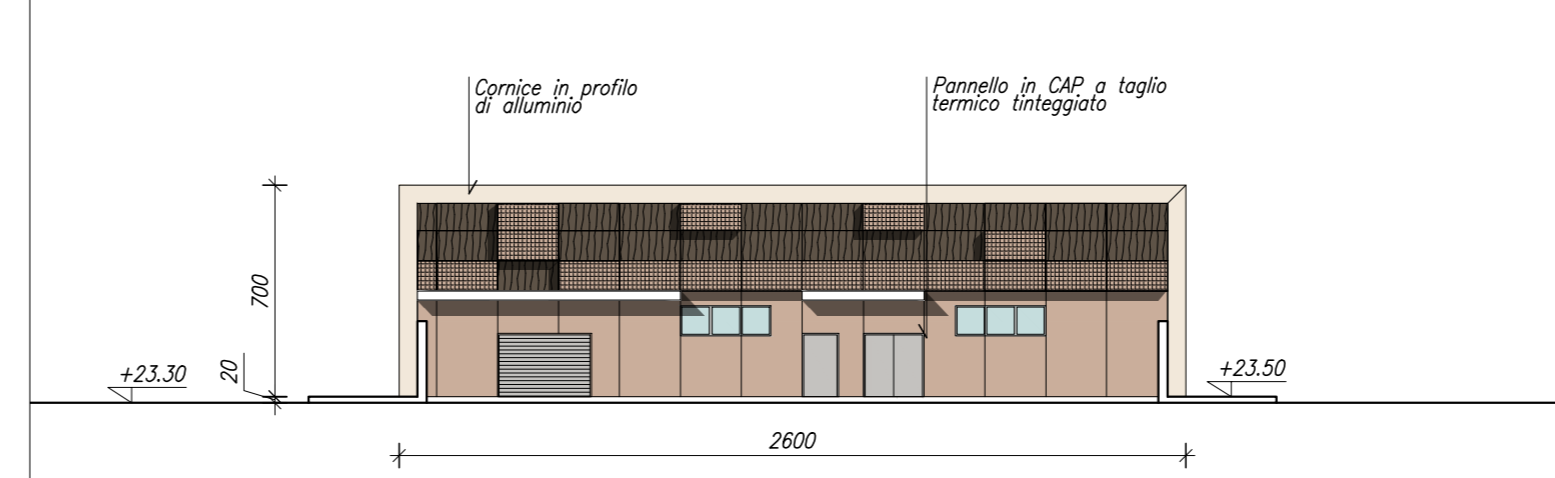
SEZIONE S1 - scala 1:250



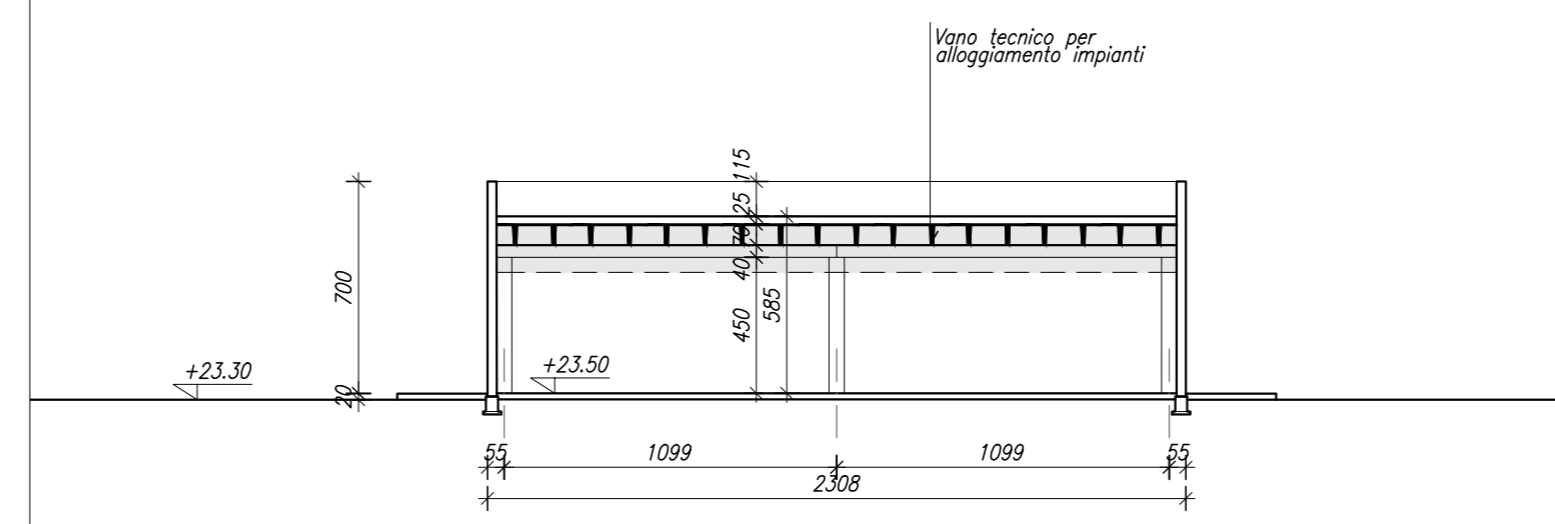
PROSPETTO EST - scala 1:250



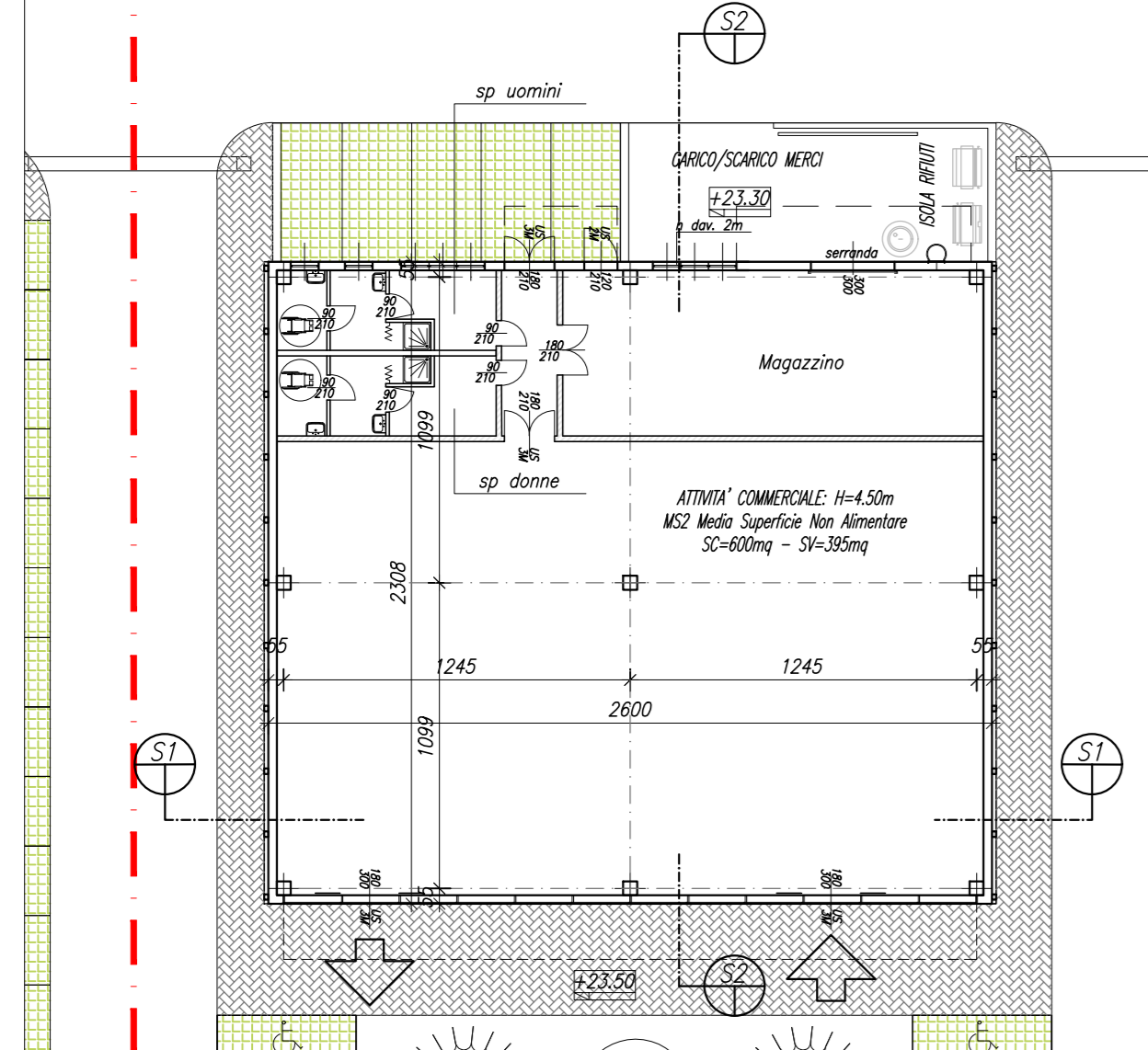
PROSPETTO OVEST - scala 1:250



SEZIONE S2 - scala 1:250



PIANTA PIANO TERRA - scala 1:250



COMMITTENTE	PIRANI GROUP S.r.l.
LOCALITÀ	CARPI (MO) Tangenziale Bruno Losi - Via Quattro Pilastrì
OGGETTO	PIANO PARTICOLAREGGIATO IN VARIANTE AL P.R.G. VIGENTE PER L'ATTUAZIONE DEL COMPARTO DI TRASFORMAZIONE F14

Cotefa.ingegneri&architetti
 Sede legale, amministrativa, operativa:
 25124 Brescia, via Cefalonia n. 70
 tel. +39 030 220692 +39 030 242177 fax +39 030 220655
 Sede operativa:
 27100 Pavia, via Capsoni n. 27
 tel. +39 0382 303999 fax +39 0382 1753916
 e-mail cotefa@cotefa.com

TECNICO INCARICATO
ING. ANDREA CASARINO

COTefa s.r.l.
 Sede: Via Cefalonia n° 70
 25124 BRESCIA
 P.IVA e Cod. Fisc. 01126260171

REV.	DESCRIZIONE REVISIONE	REDAZ.	DATA	CONTR.	DATA	APPROV.	DATA
0	PRIMA STESURA	FP	26/05/2021	ML	26/05/2021	ML	26/05/2021
1							
2							
3							

ELABORATO
A 11

EDIFICIO B e EDIFICIO C - PIANTE, SEZIONI, PROSPETTI

SCALA: 1:250 DATA: 24/09/2021 PROT.: 20-04 ARCH/COEN: 48143

ESCLUSIVO PER CONSULTAZIONE E PROSPETTI - VARIANTE TRASFORMAZIONE