

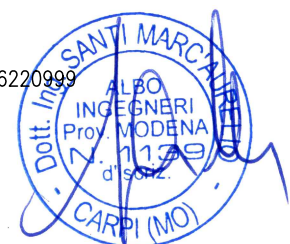
VARIANTE 2 PIANO PARTICOLAREGGIATO COMPARTO "A1" EX-NUOVA SILAN

RELAZIONE FOTOGRAFICA

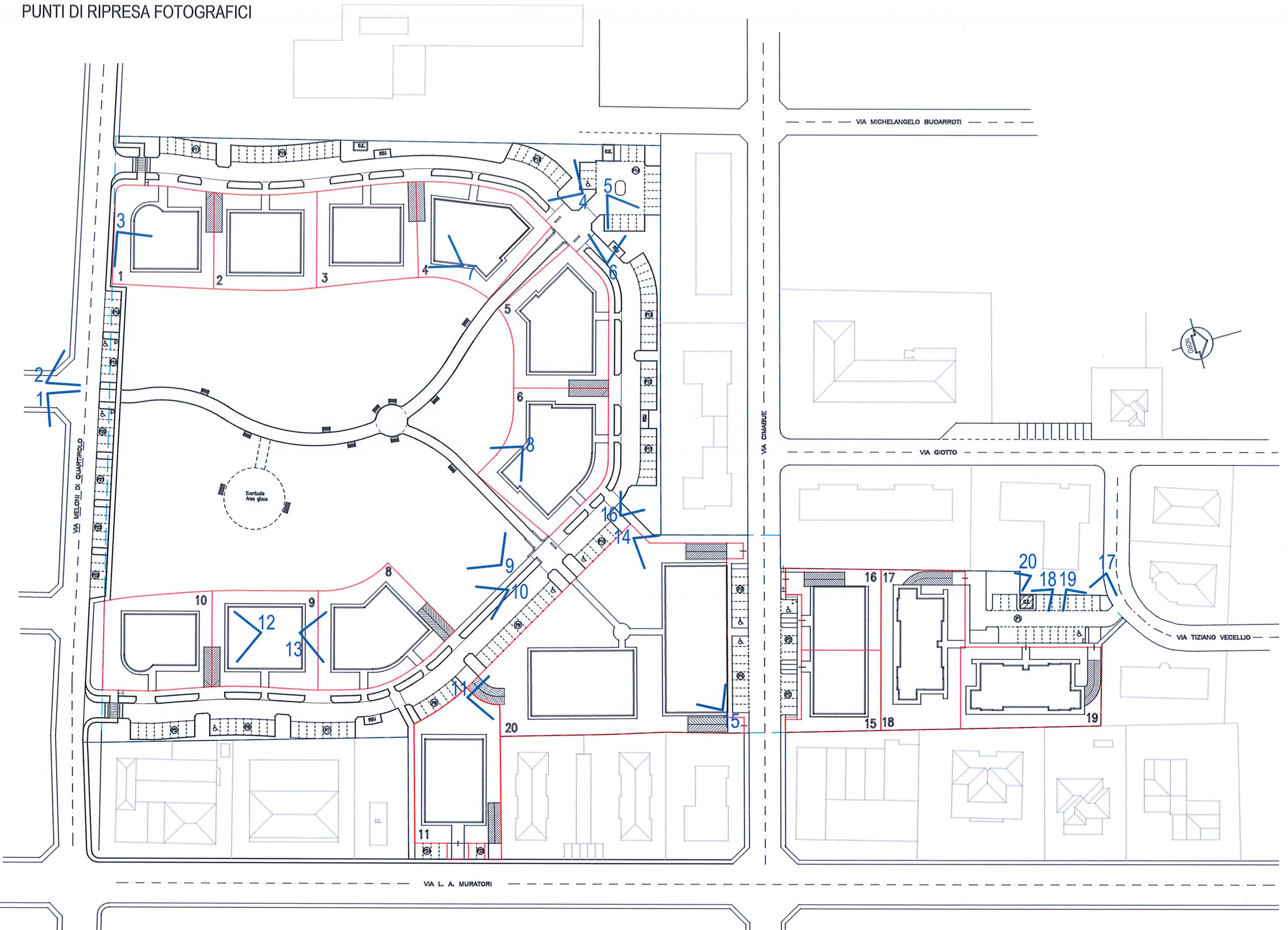


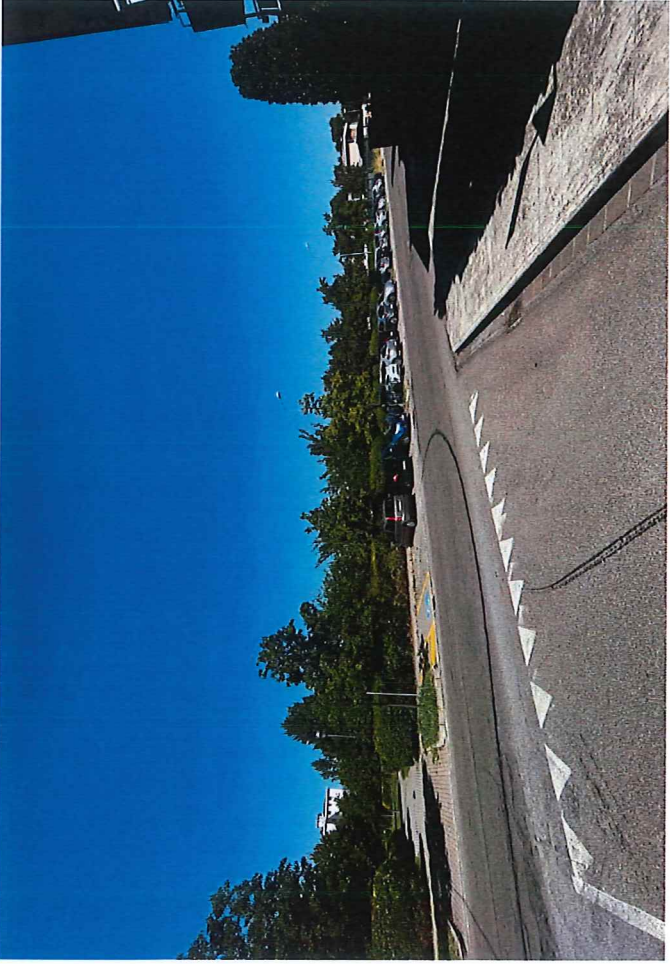
INGEGNERE MARC'AURELIO SANTI

Via C. Cattaneo, 17, 41012 Carpi – tel 059/6229007 fax 059/6220999
Email ingsanti@ingsanticarpi.eu



PUNTI DI RIPRESA FOTOGRAFICI

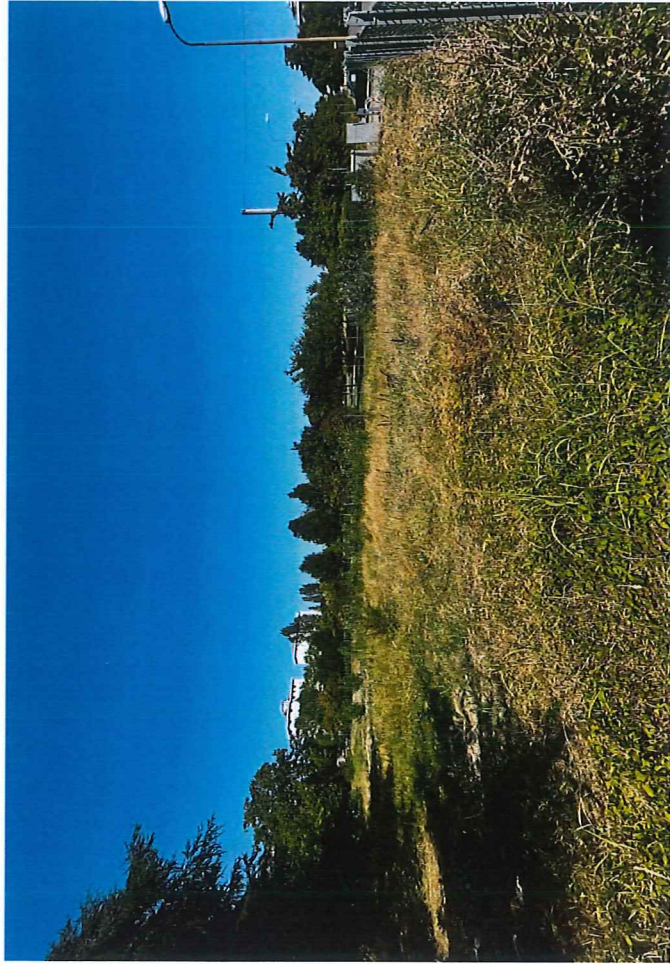




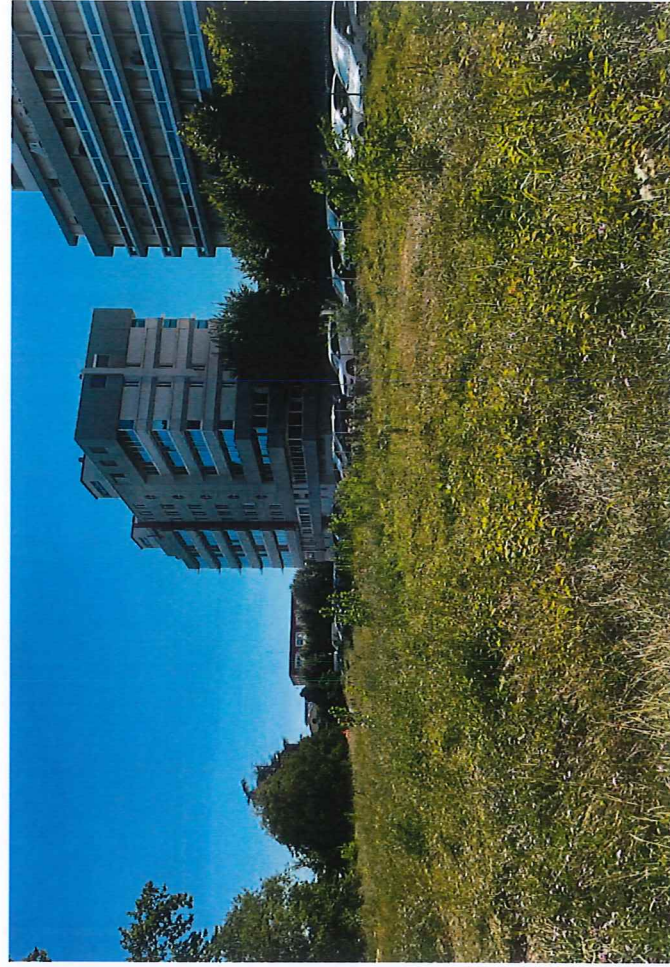
1



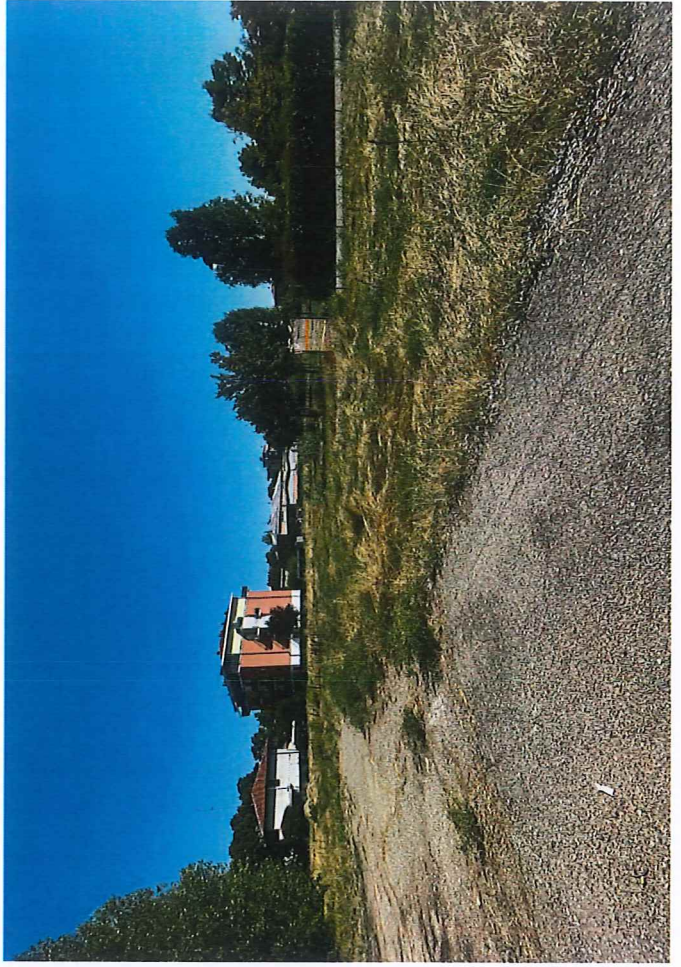
2



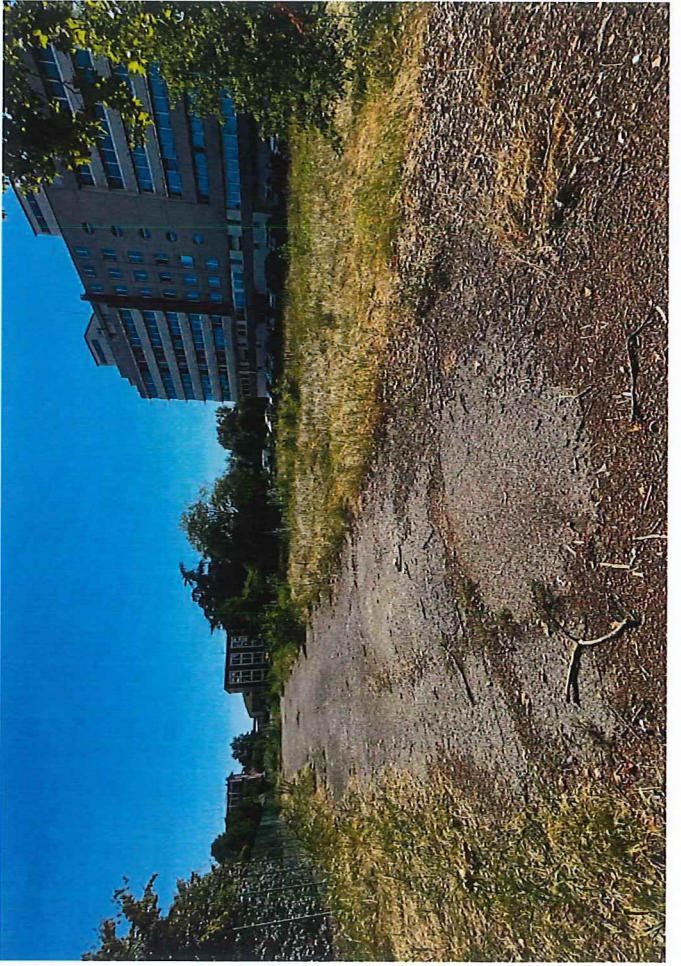
3



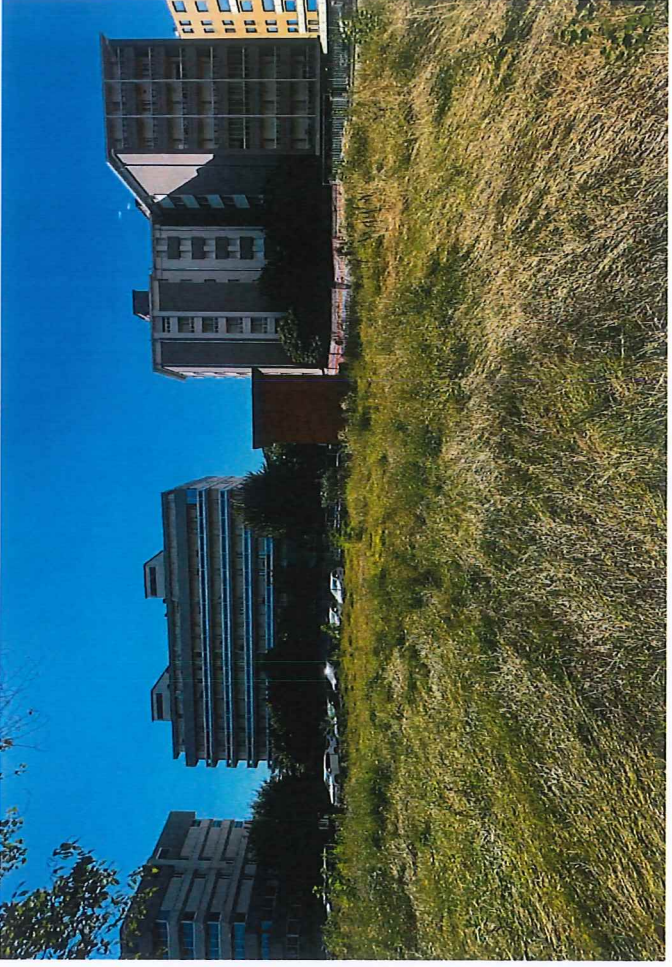
4



8



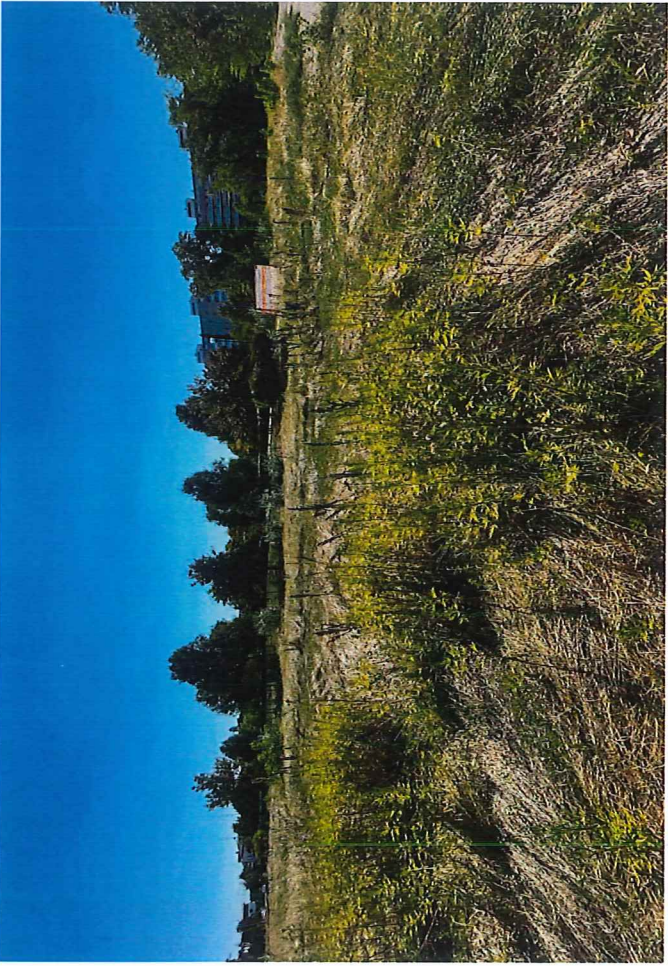
7



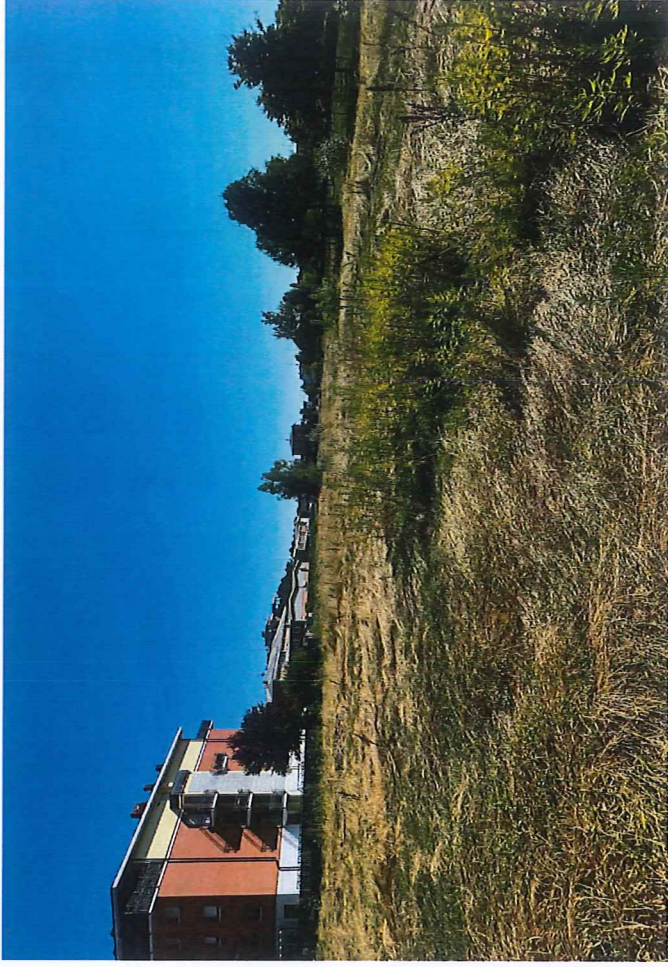
6



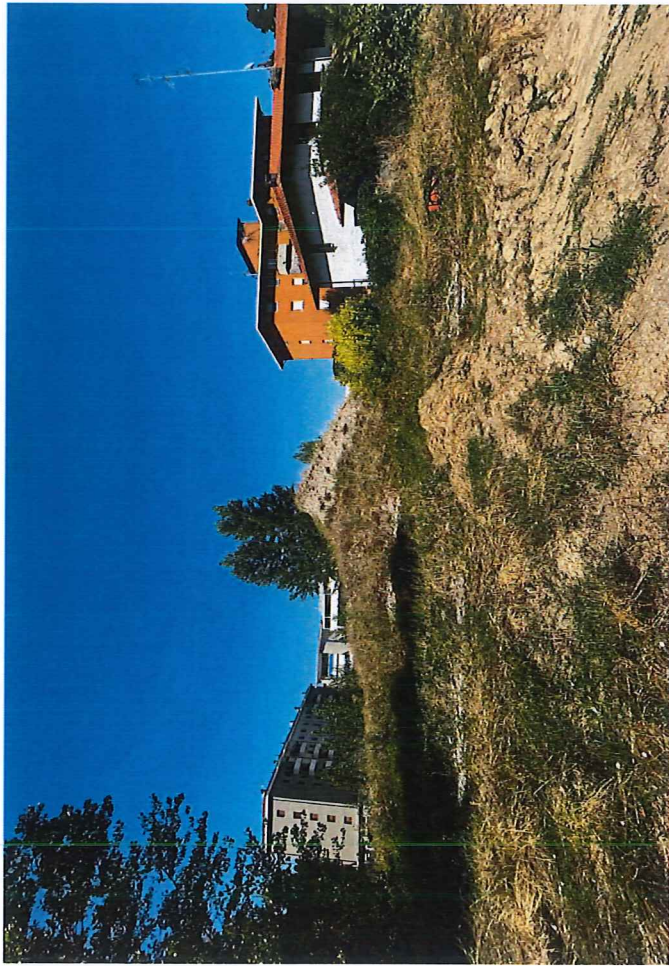
5



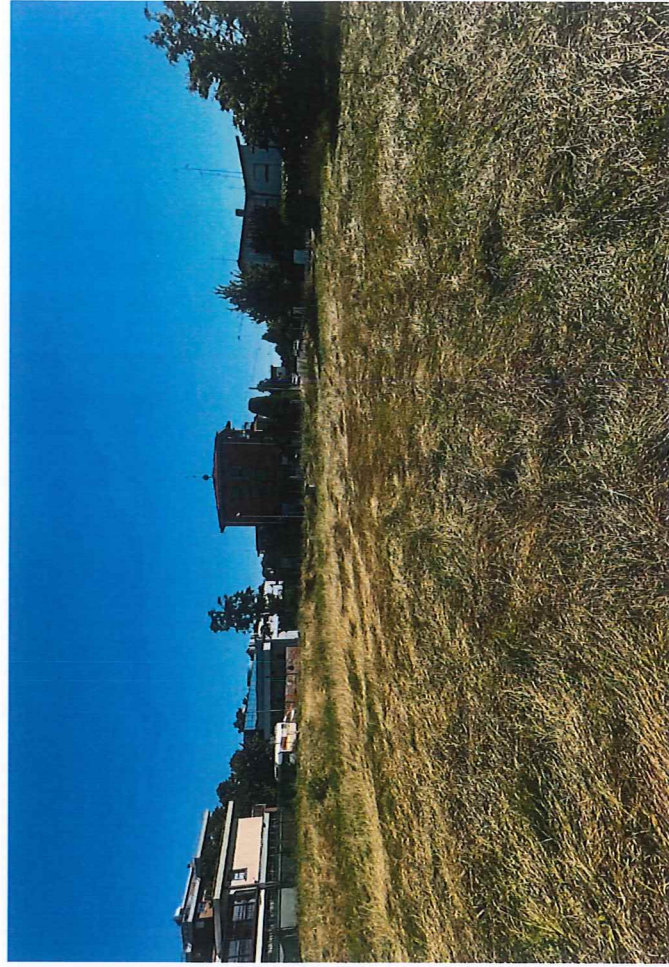
9



10



11



12



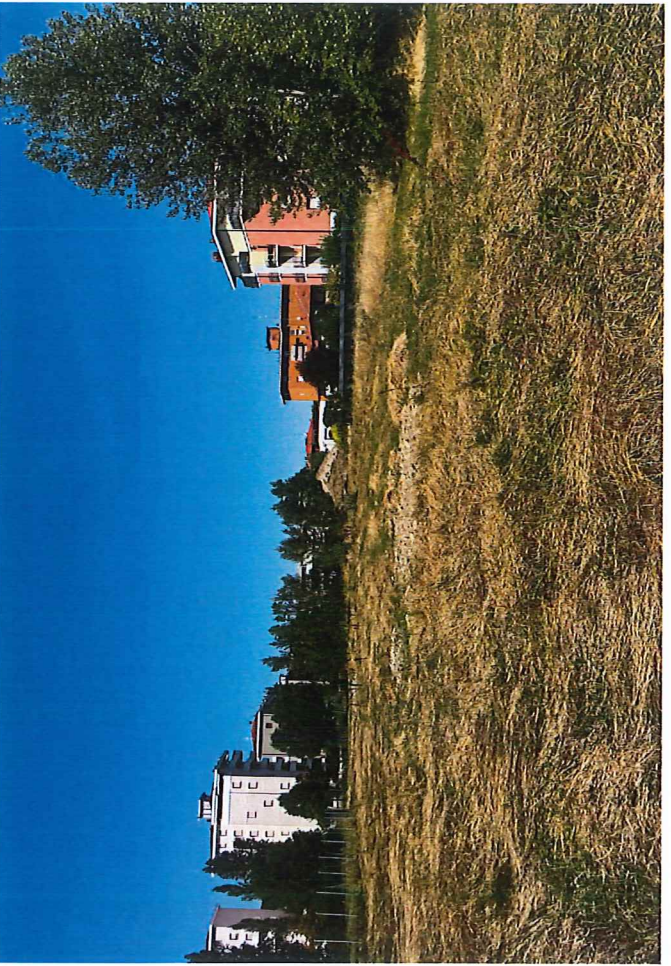
16



15



14



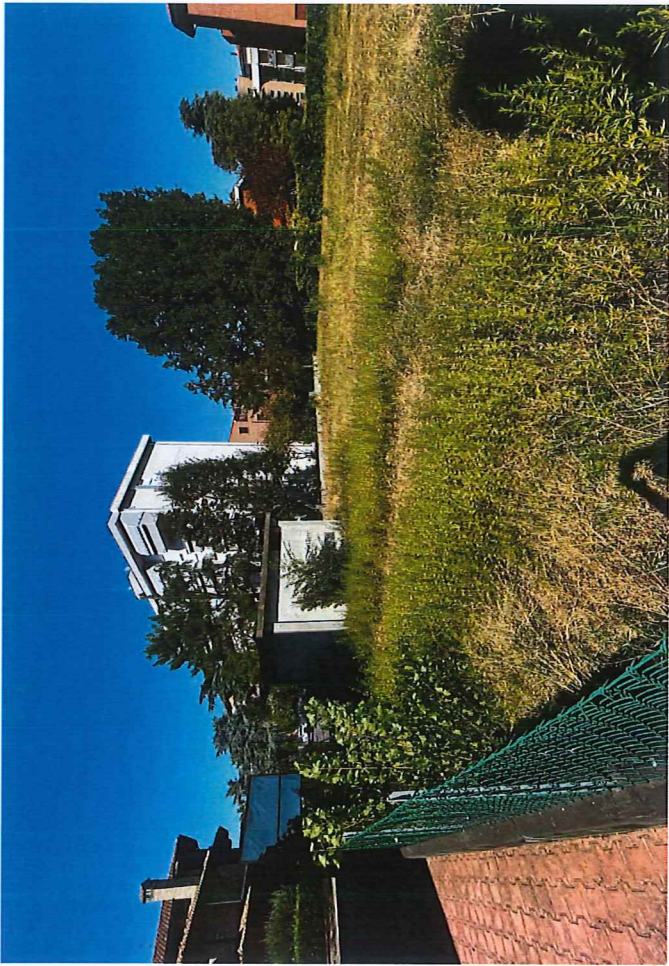
13



17



18



19



20