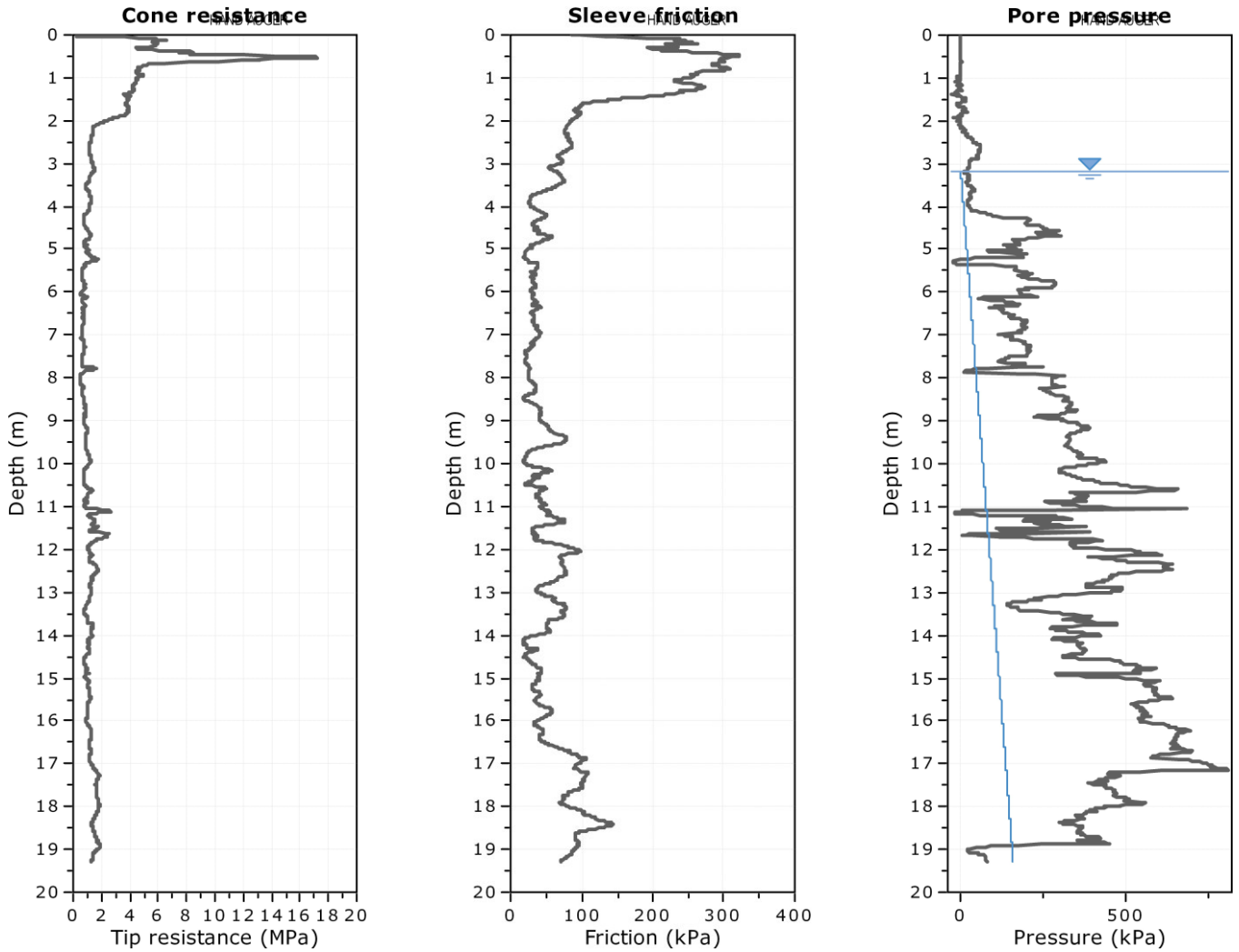
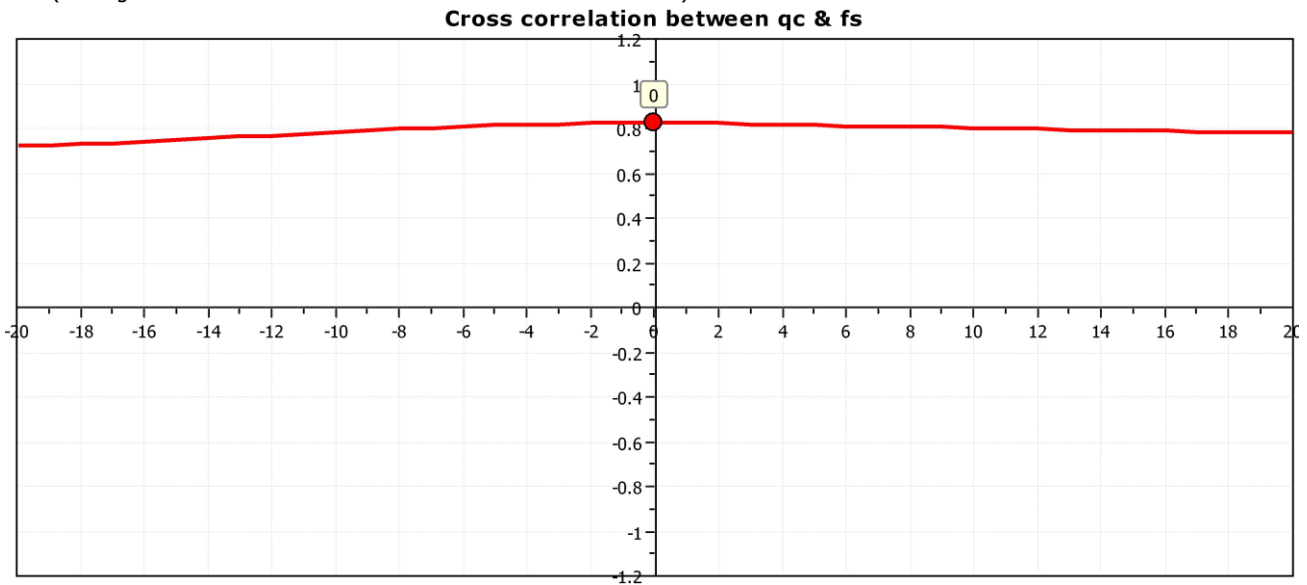


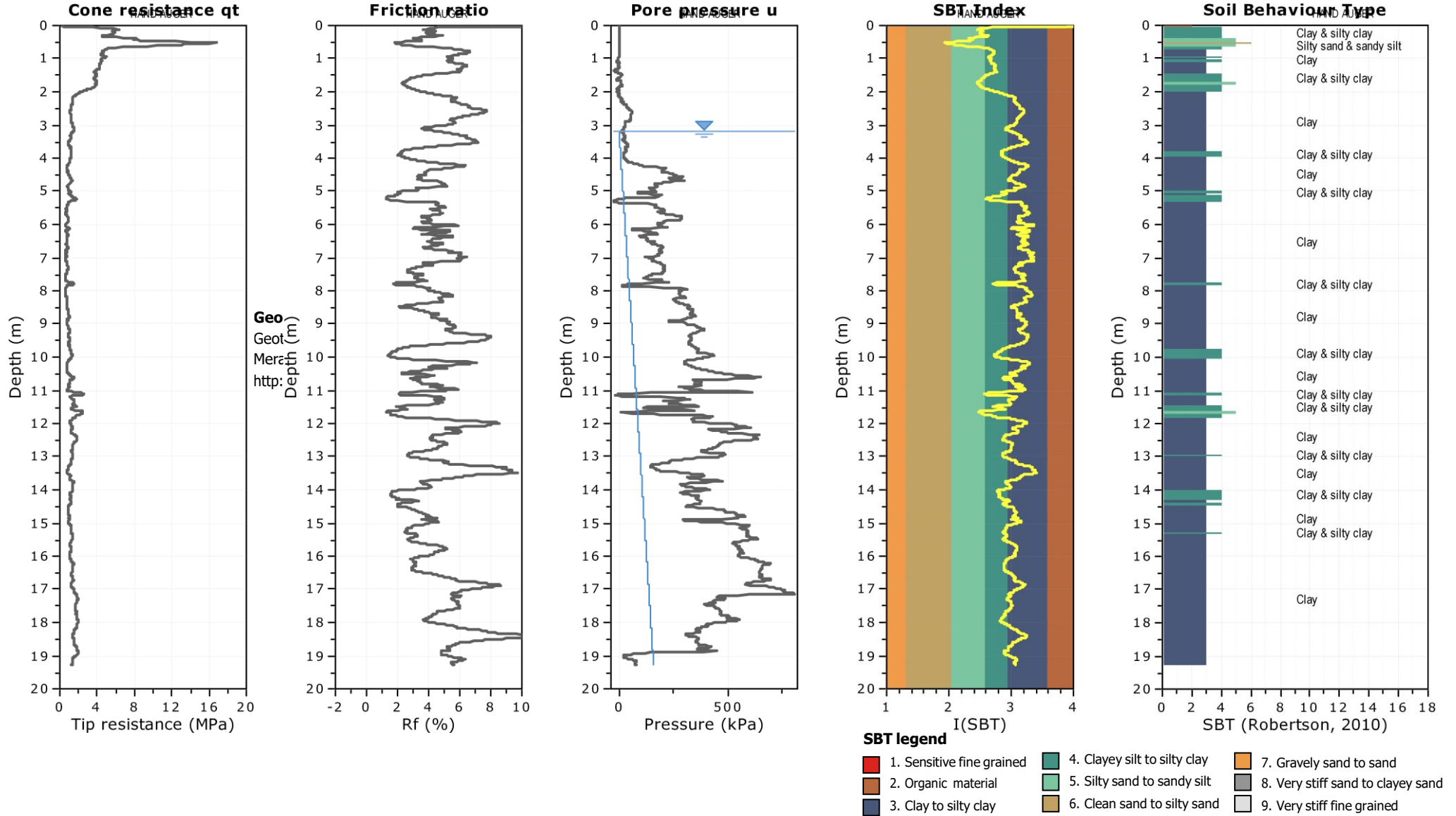
ALLEGATO 1

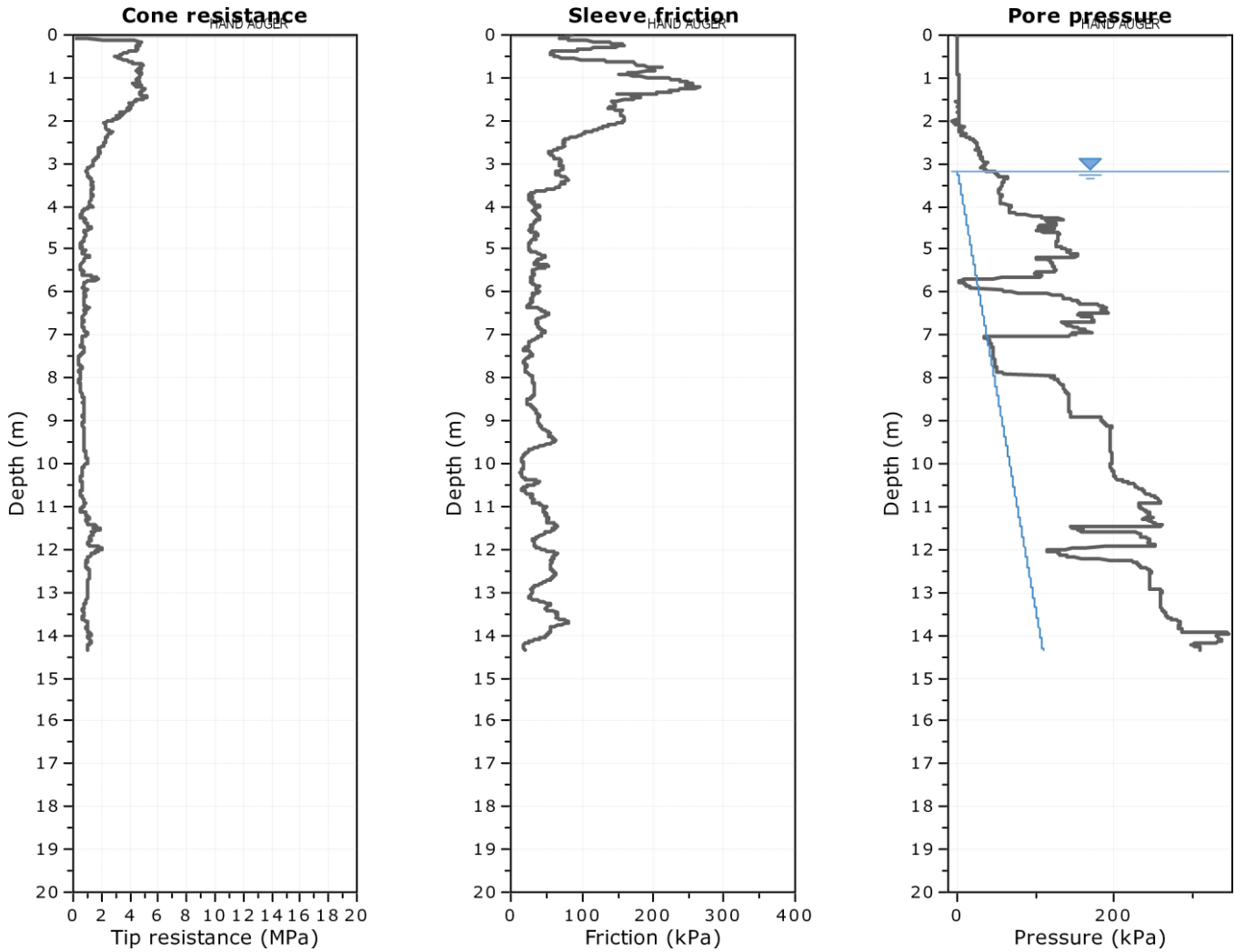
prove penetrometriche statiche CPTU



The plot below presents the cross correlation coefficient between the raw q_c and f_s values (as measured on the field). X axes presents the lag distance (one lag is the distance between two successive CPT measurements).







The plot below presents the cross correlation coefficient between the raw q_c and f_s values (as measured on the field). X axes presents the lag distance (one lag is the distance between two successive CPT measurements).

