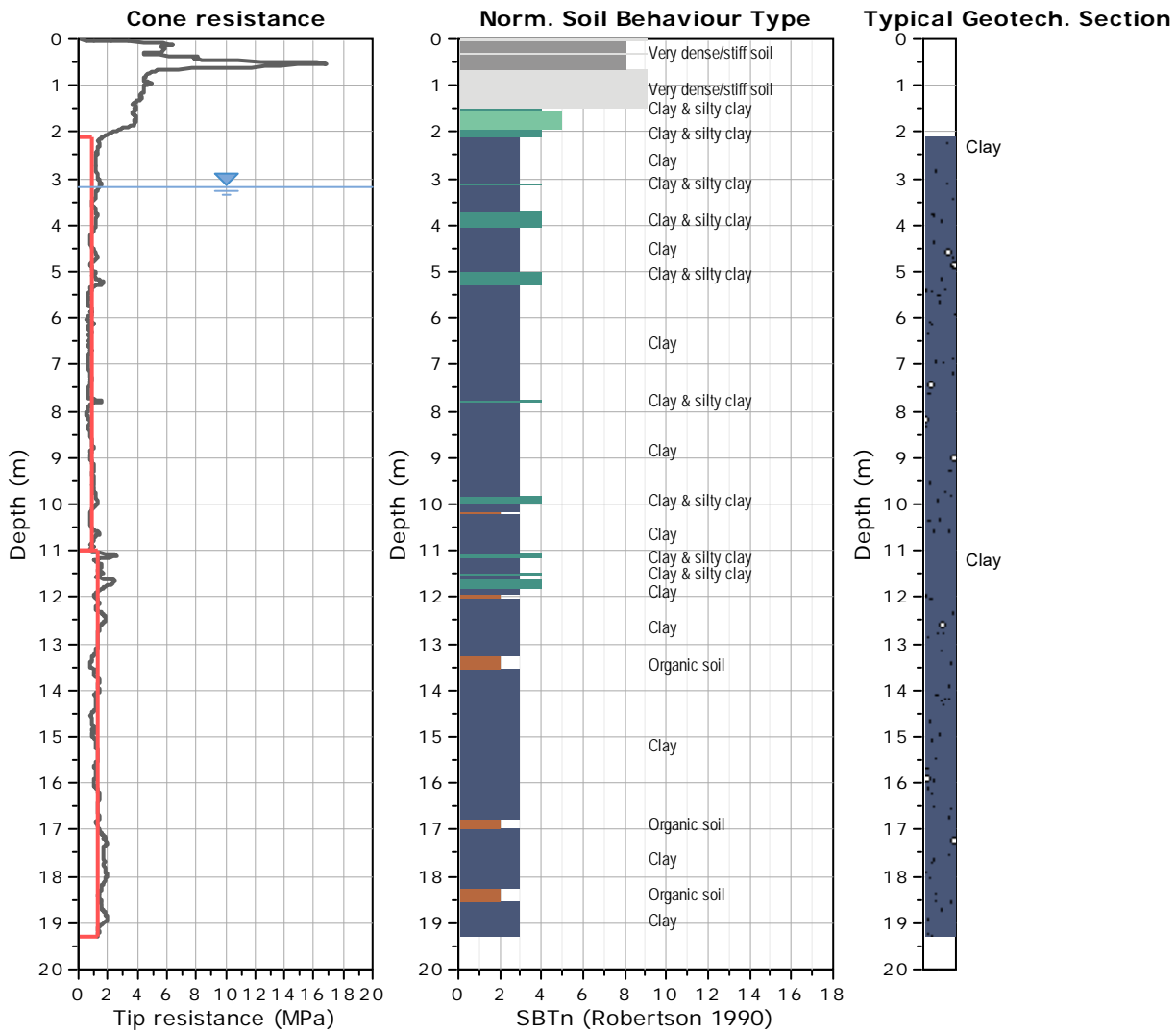


ALLEGATO 3

Parametri geotecnici caratteristici



Tabular results

::: Layer No: 1 :::		
Code: strato1	Start depth: 2.10 (m), End depth: 11.00 (m)	
Description: Clay		c': 10 kPa phi': 22°
Basic results	Estimation results	
Total cone resistance: 0.93 ±0.25 MPa	Permeability: 0.00E+00 ±1.86E-08 m/s	Constrained Mod.: 4.7 MPa
Sleeve friction: 38.36 ±18.43 kPa	N ₆₀ : 5.18 ±0.86 blows	Go: 34.89 ±6.13 MPa
Ic: 3.12 ±0.21	Es: 0.00 ±0.00 MPa	Su: 53.48 ±17.77 kPa
SBT _n : 3	Dr (%): 0.00 ±0.00	Su ratio: 0.65 ±0.43
SBTn description: Clay	φ (degrees): 0.00 ±0.00 °	O.C.R.: 3.24 ±2.98
	Unit weight: 17.5 kN/m ³	

:: Layer No: 2 ::**Code:** strato2 **Start depth:** 11.00 (m), **End depth:** 19.30 (m)**Description:** Clay

c': 14 kPa

phi': 22°

Basic results**Estimation results**

Total cone resistance: 1.35 ±0.32 MPa

Permeability: 0.00E+00 ±1.26E-08 m/s

Constrained Mod.: 6.7 MPa

Sleeve friction: 57.95 ±28.54 kPa

N₆₀: 8.25 ±1.59 blows

Go: 57.34 ±14.59 MPa

Ic: 3.25 ±0.18

Es: 0.00 ±0.00 MPa

Su: 72.10 ±21.17 kPa

SBT_n: 3

Dr (%): 0.00 ±0.00

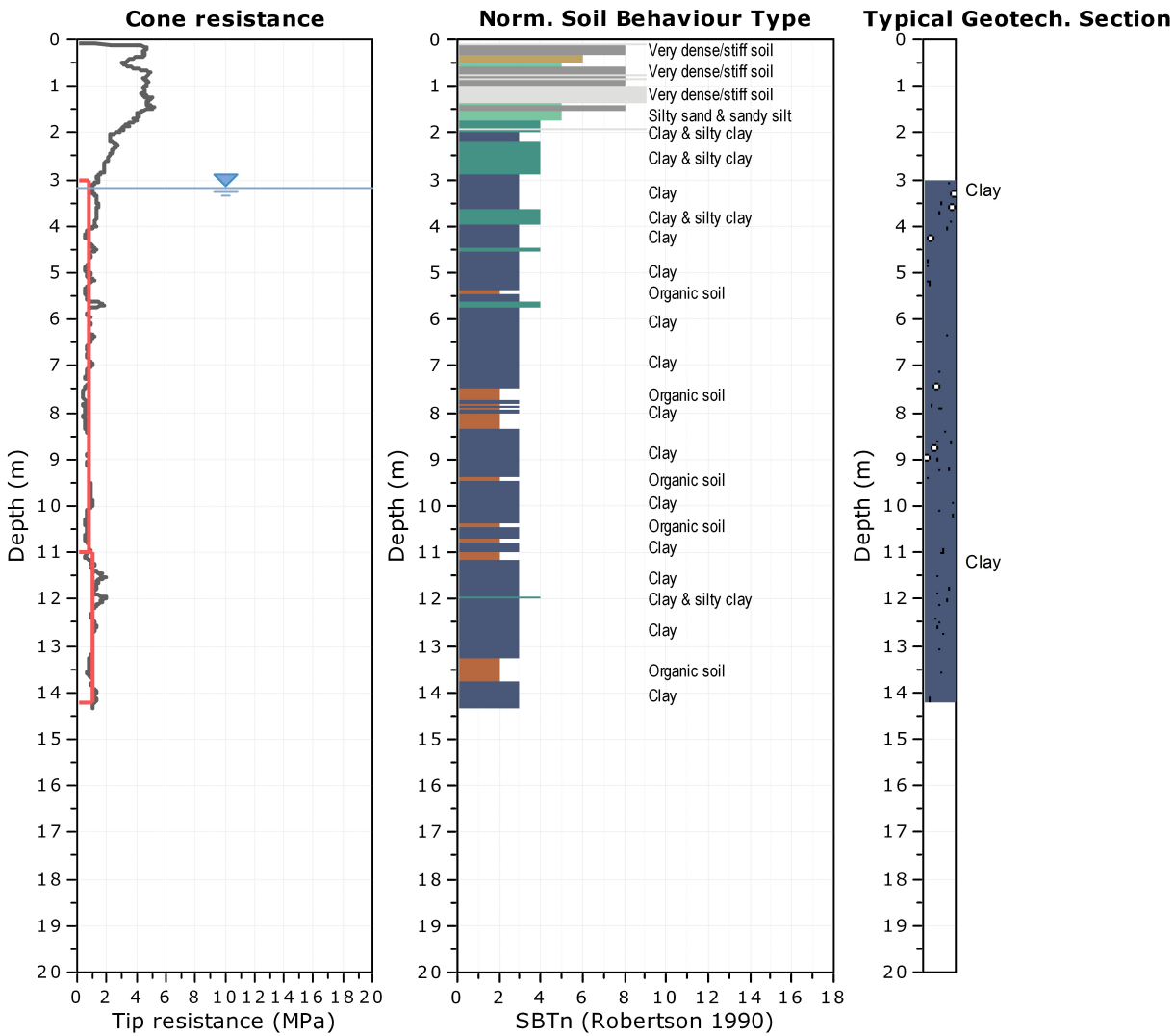
Su ratio: 0.49 ±0.17

SBT_n description: Clay

φ (degrees): 0.00 ±0.00 °

O.C.R.: 2.20 ±1.38

Unit weight: 18 kN/m³



Tabular results

::: Layer No: 1 :::		
Code: strato1	Start depth: 3.00 (m), End depth: 11.00 (m)	
Description: Clay		c' : 8 kPa ϕ i': 20°
Basic results	Estimation results	
Total cone resistance: 0.77 ±0.25 MPa	Permeability: 0.00E+00 ±1.38E-08 m/s	Constrained Mod.: 4 MPa
Sleeve friction: 32.77 ±14.09 kPa	N_{60} : 4.66 ±0.89 blows	G_o : 31.49 ±5.60 MPa
Ic: 3.24 ±0.24	Es: 0.00 ±0.00 MPa	Su: 42.22 ±18.09 kPa
SBT _n : 3	Dr (%): 0.00 ±0.00	Su ratio: 0.49 ±0.32
SBTn description: Clay	ϕ (degrees): 0.00 ±0.00 °	O.C.R.: 2.23 ±2.32
	Unit weight: 17 kN/m ³	

:: Layer No: 2 ::**Code:** strato2 **Start depth:** 11.00 (m), **End depth:** 14.20 (m)**Description:** Clay

c': 11 kPa

phi': 22°

Basic results

Total cone resistance: 1.07 ±0.27 MPa

Sleeve friction: 47.94 ±13.08 kPa

Ic: 3.30 ±0.21

SBT_n: 3

SBTn description: Clay

Estimation results

Permeability: 1.17E-09 ±4.40E-09 m/s

N₆₀: 6.72 ±0.92 blows

Es: 0.00 ±0.00 MPa

Dr (%): 0.00 ±0.00

φ (degrees): 0.00 ±0.00 °

Unit weight: 18 kN/m³

Constrained Mod.: 5.3 MPa

Go: 46.74 ±5.83 MPa

Su: 56.35 ±18.57 kPa

Su ratio: 0.44 ±0.16

O.C.R.: 1.92 ±1.15