

**Marc'Aurelio
Santi
Ingegnere**

CANTINA DI CARPI E SORBARA

Committente: SOC. AGRICOLA COOPERATIVA

Oggetto: PROCEDIMENTO UNICO AI SENSI ART. 53
LEGGE REGIONALE n.24 DEL 2017

Ubicazione: CARPI — VIA CAVATA, 14

Tavola: PROFILI ALTIMETRICI

Note: PROGETTO

5
N. 1:1000
Rapp. 1:500

Data: 14.04.22

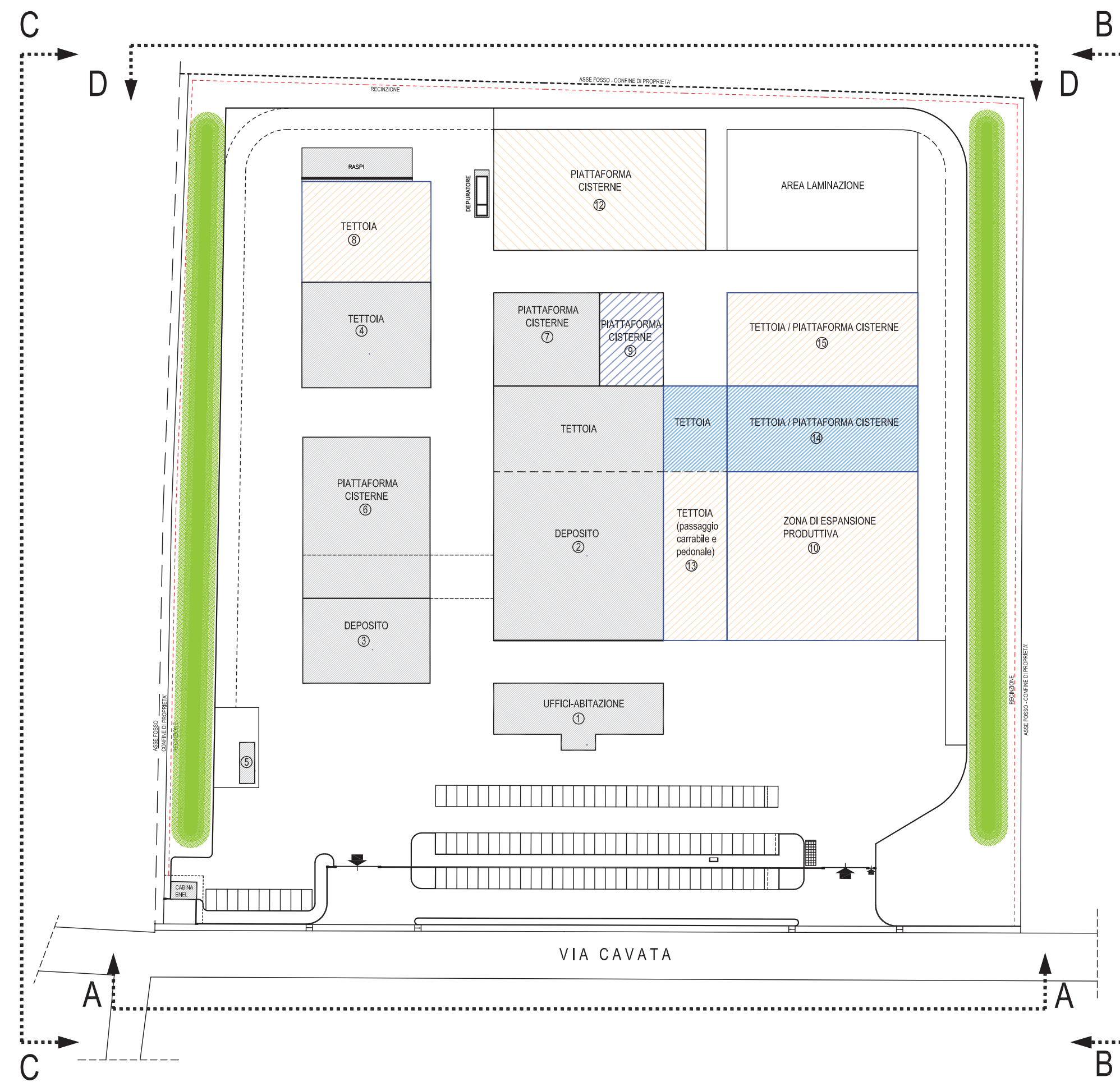
Agg:

Studio Tecnico - Via C. Cattaneo n. 17 - Tel. 059/622.90.07 - Fax 059/622.09.99 - 41012 Carpi (MO) - E-Mail: mgsanti@ingsantincarpi.eu







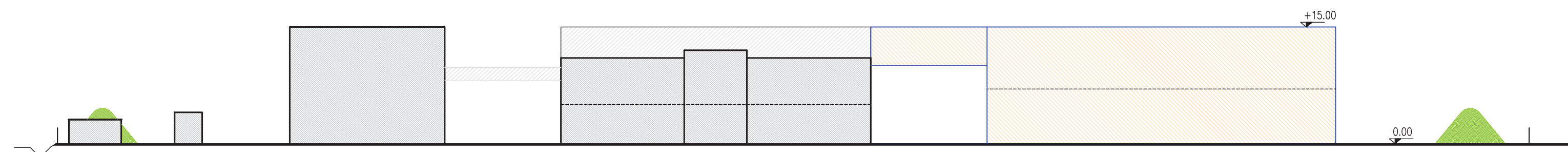
Carpi (MO)

PLANIMETRIA GENERALE

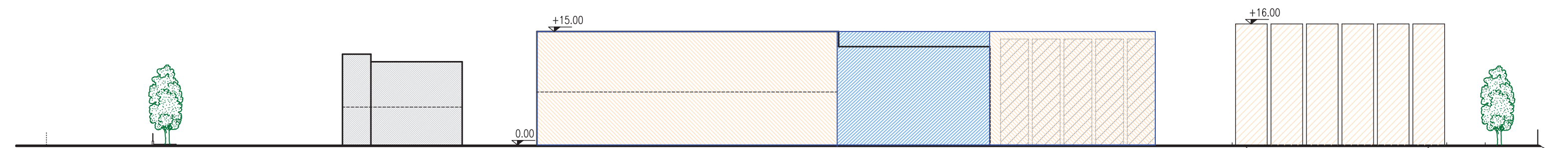


LEGENDA

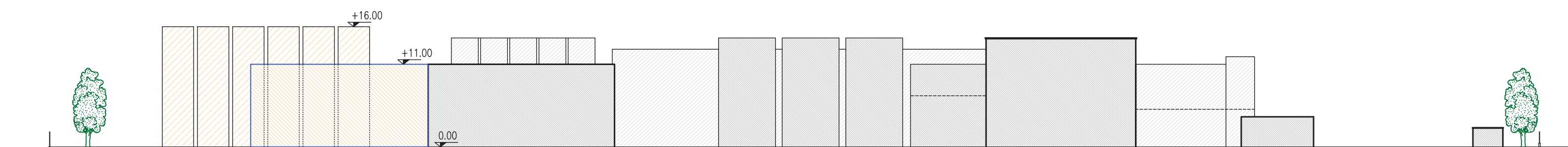
-  STRUTTURE ESISTENTI
-  PREVISTO DA PIANO APPROVATO
-  STRUTTURE PROGRAMMATE
-  14 - TETTOIA STRUTTURE ESECUTIVO



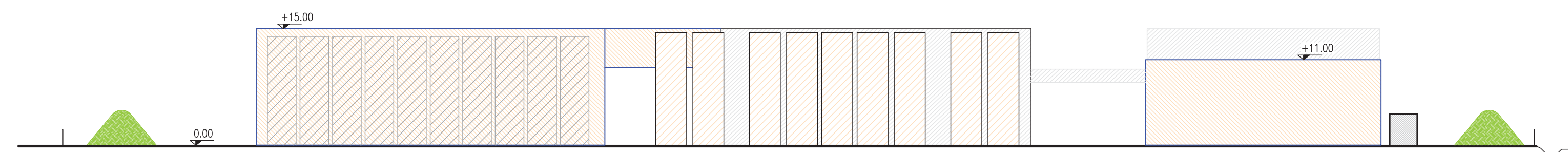
PROFILO OVEST A-A



PROFILO SUD B-B



PROFILO NORD C-C



PROFILO EST D-D