

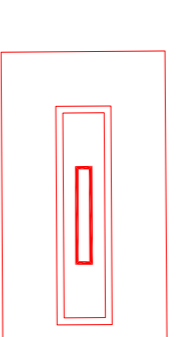
I MATERIALI DEL PROGETTO

UN SEGNO SEMPLICE: "ARCHETIPICO"
 LA RETTA

UNA GEOMETRIA SPONTANEA: "FORTE"

L'INCROCIO DI DUE RETTE

LA MEMORIA:
 UNA STELE

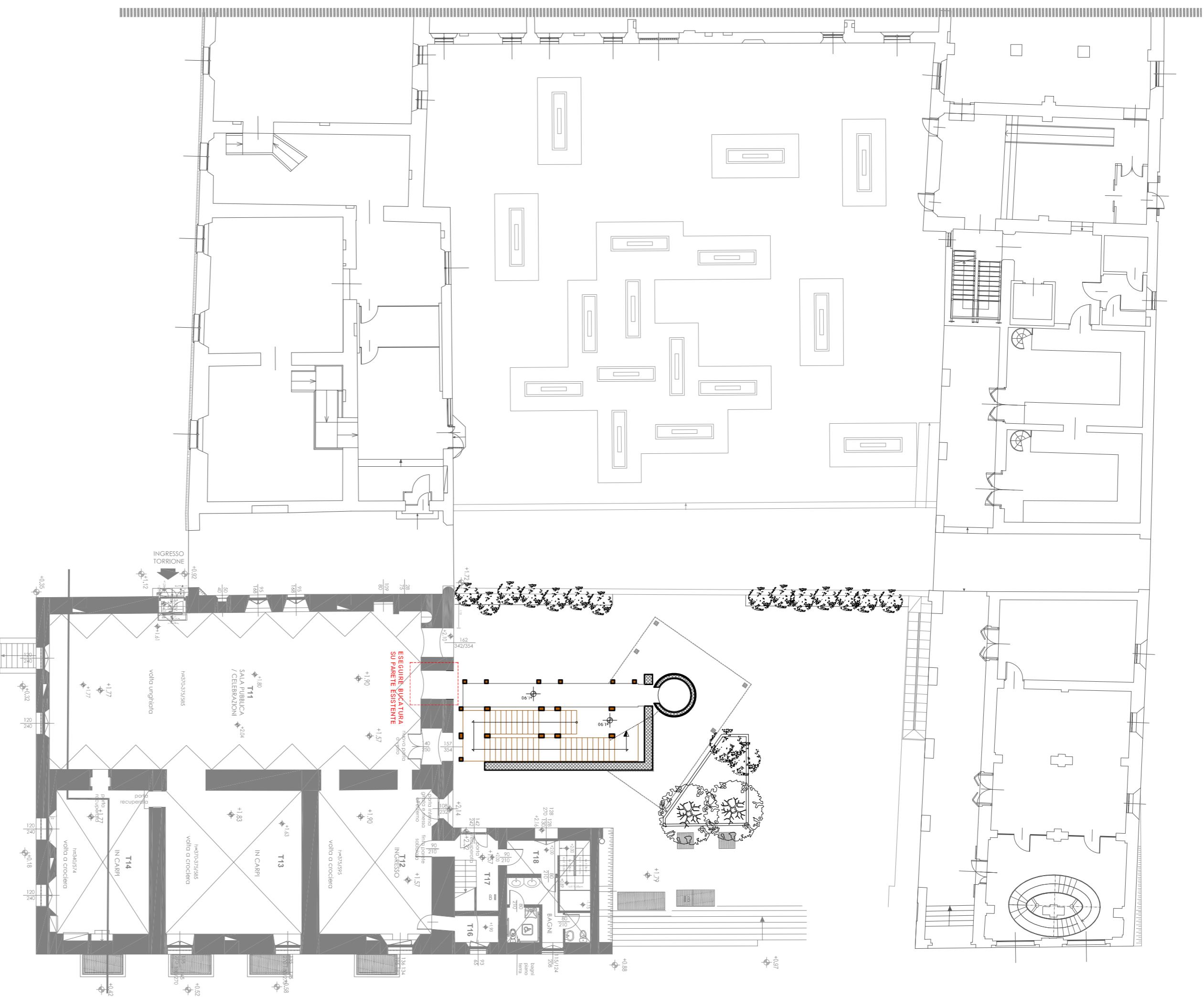
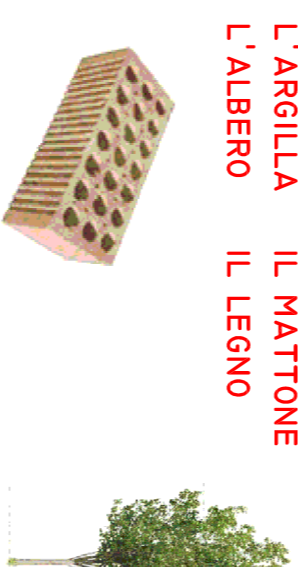


LA STORIA: E LA CICLICA NECESSITA'
 DI RISOLVERE GLI STESSI PROBLEMI
 FUNZIONALI E SPAZIALI



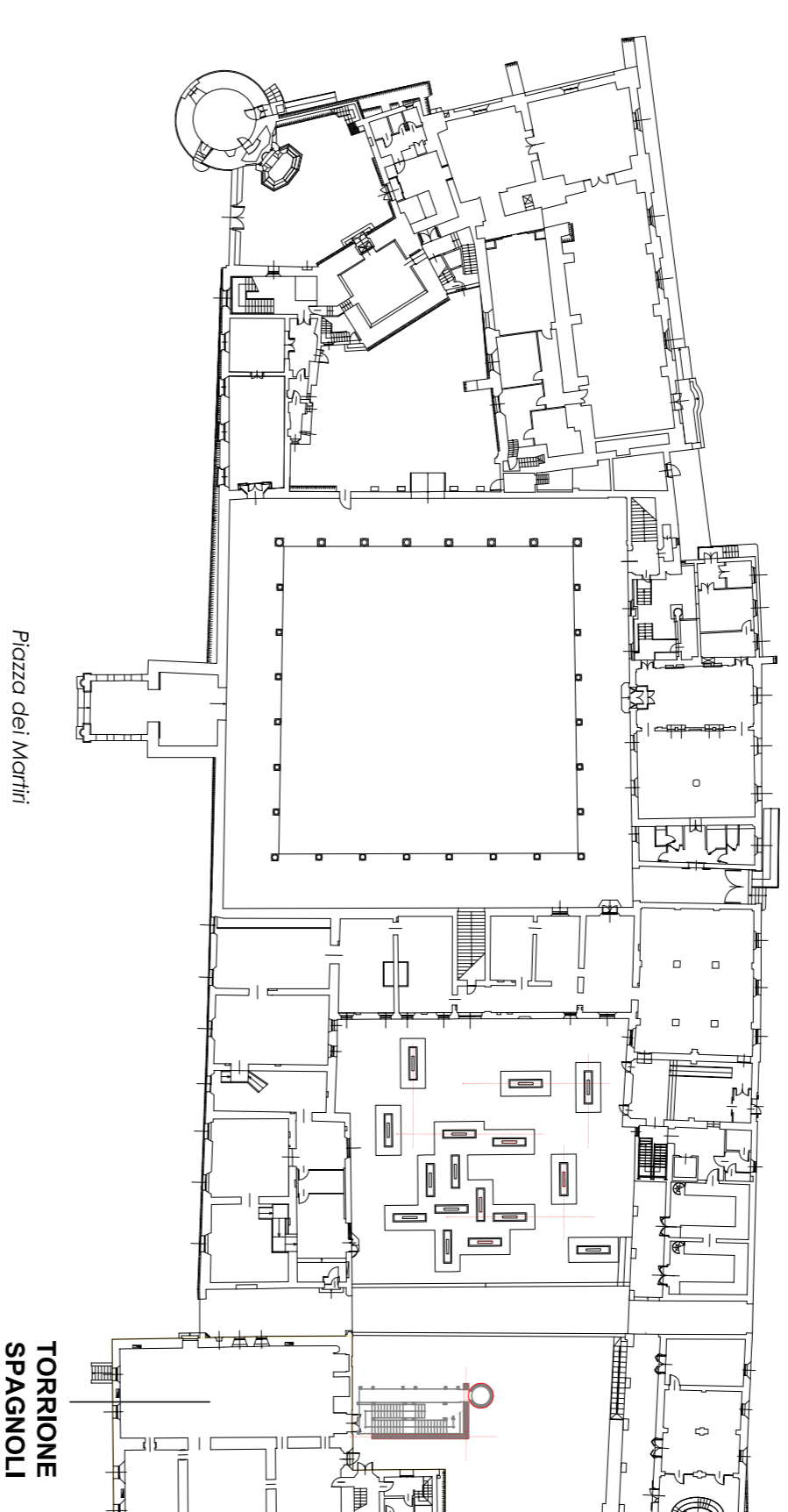
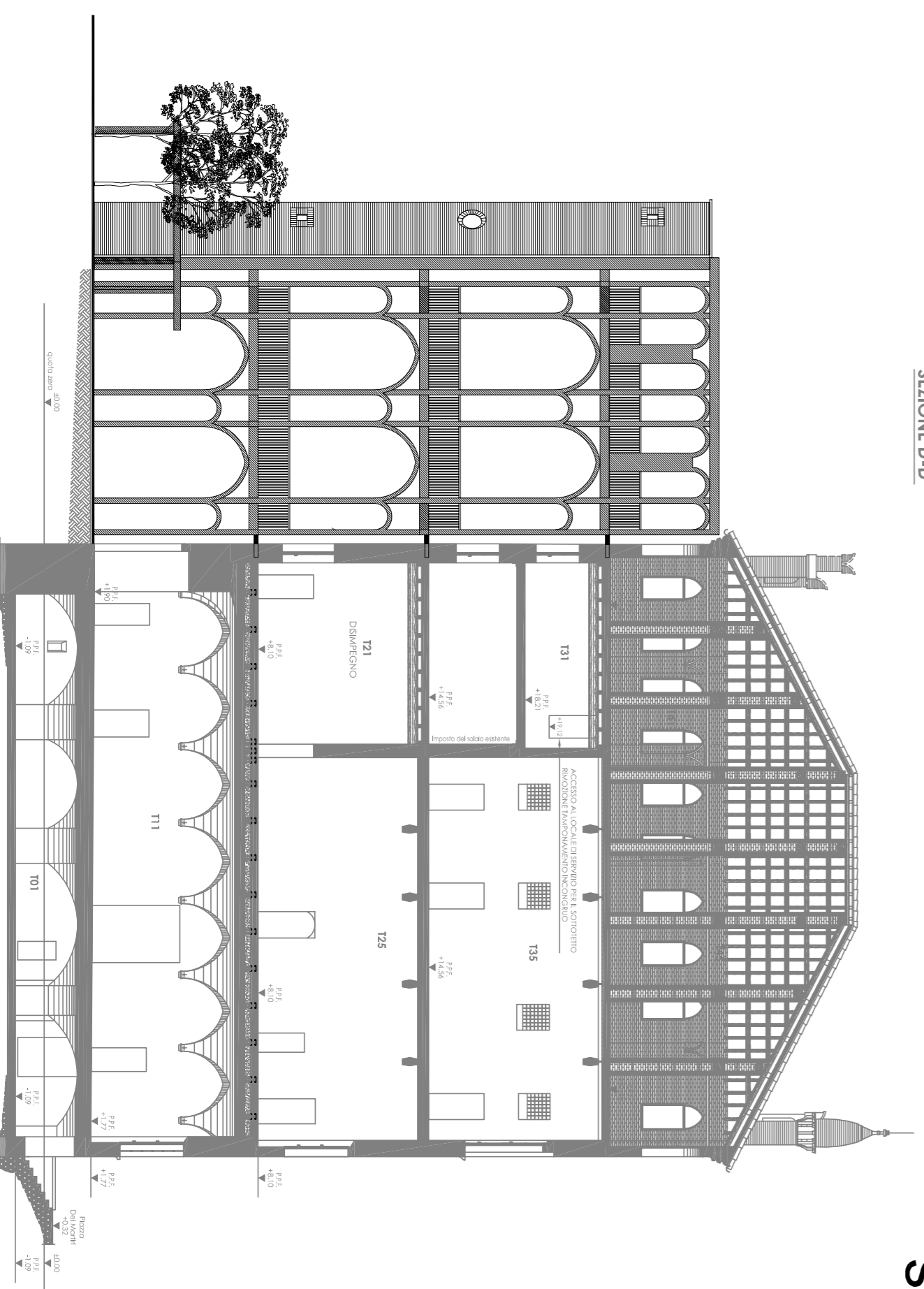
SCALA CONTARINI DEL BOVOLO

RISORSE NATURALI ECOSOSTENIBILI
 L'ARGILLA IL MATTONE
 L'ALBERO IL LEGNO



SC.: 1:200

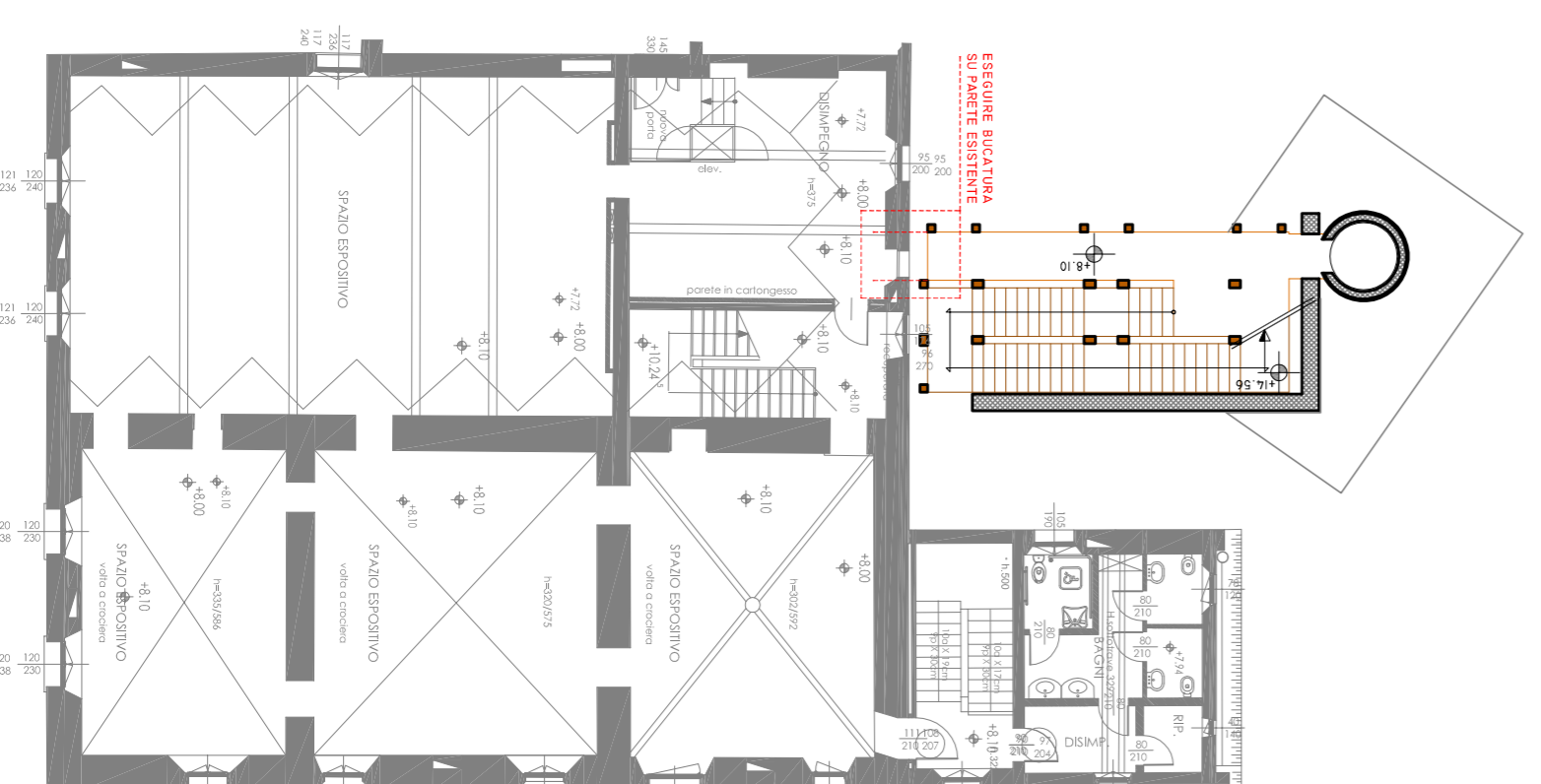
SEZIONE D-D'



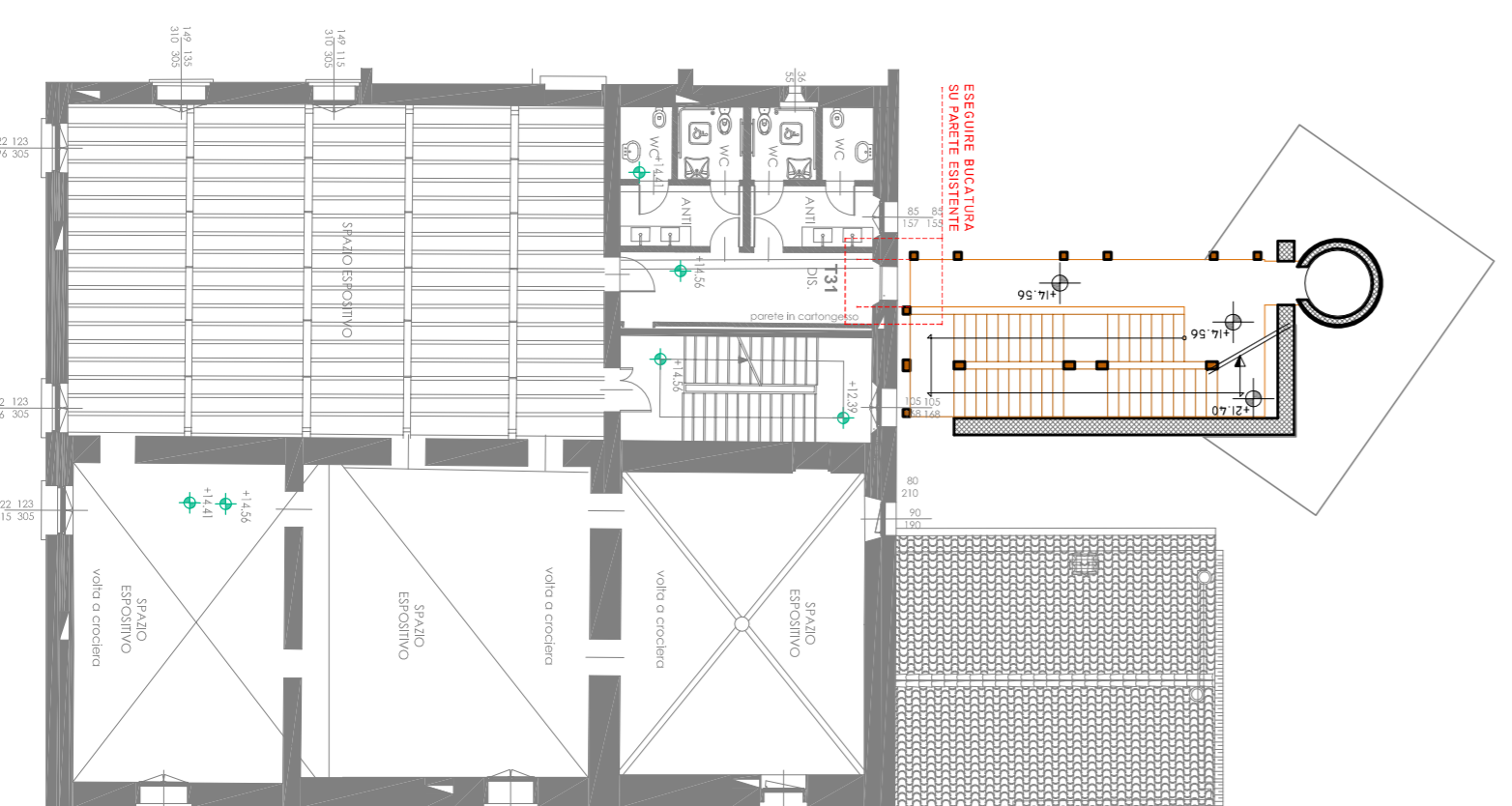
Piazza dei Martiri

Piazza Re Astolfo

TORRIONE
 SPAGNOLI



sc.: 1:200



sc.: 1:200

