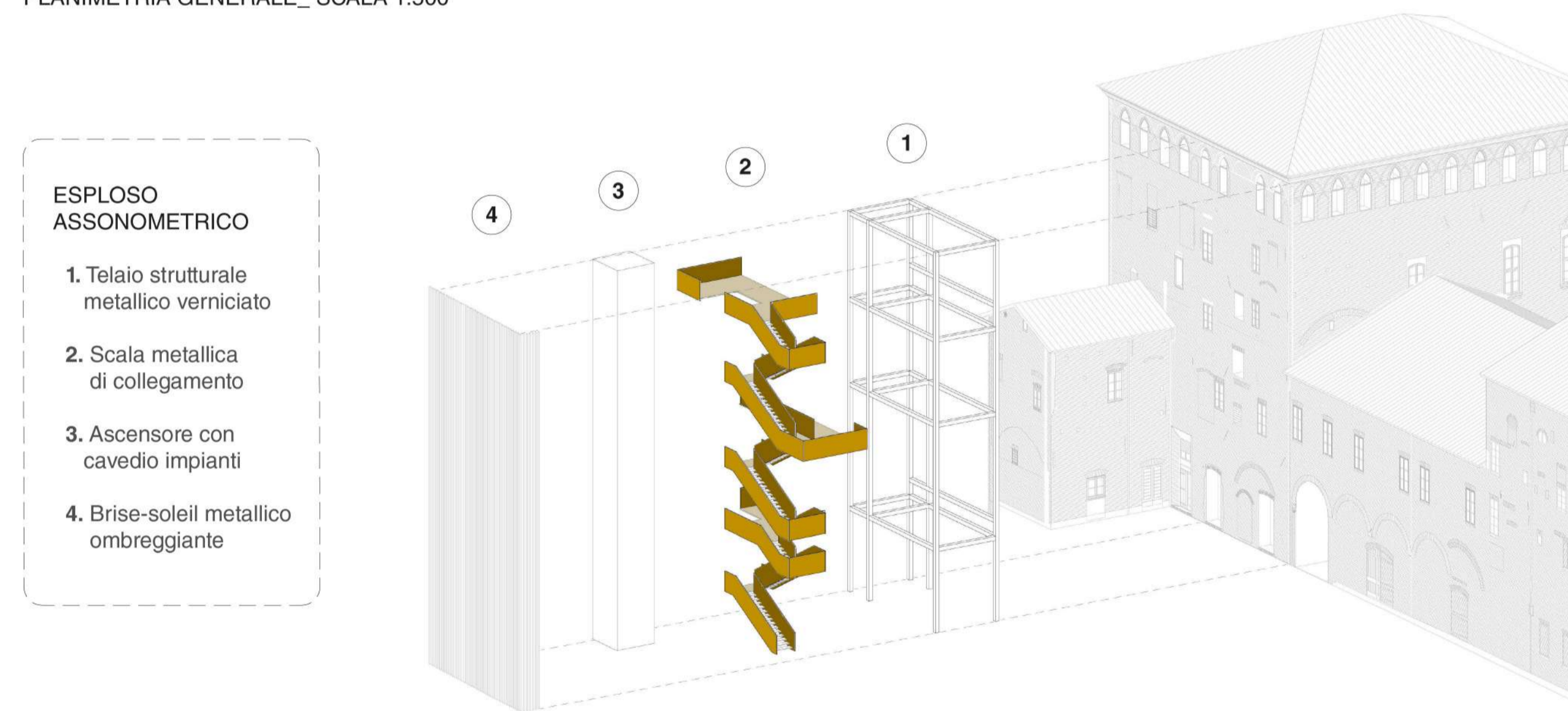


PLANIMETRIA GENERALE_ SCALA 1:500

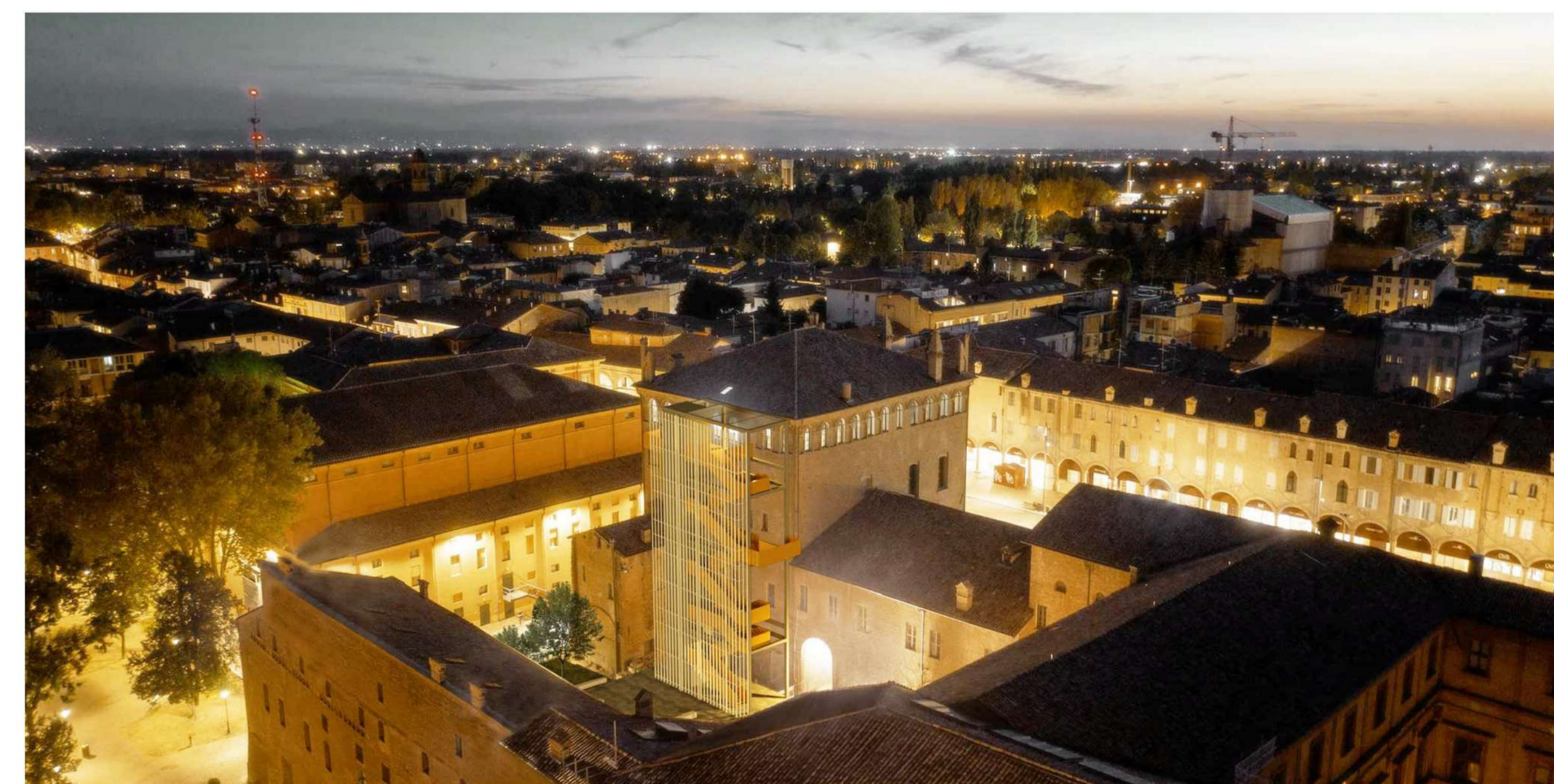


VISTA DIURNA A VOLO D'UCCELLO

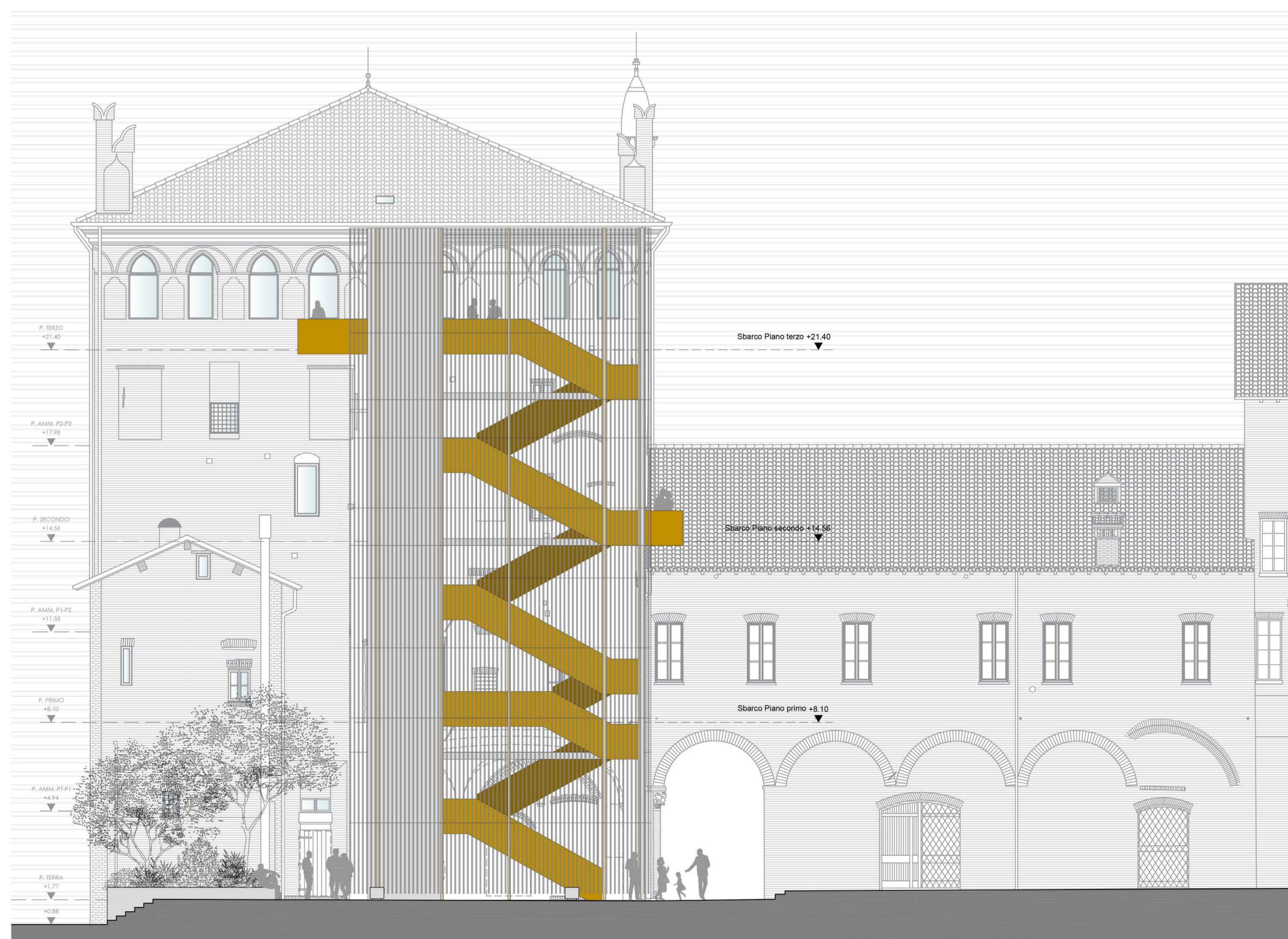


ESPLOSO ASSONOMETRICO

1. Telaio strutturale metallico verniciato
2. Scala metallica di collegamento
3. Ascensore con cavedio impianti
4. Brise-soleil metallico ombreggiante



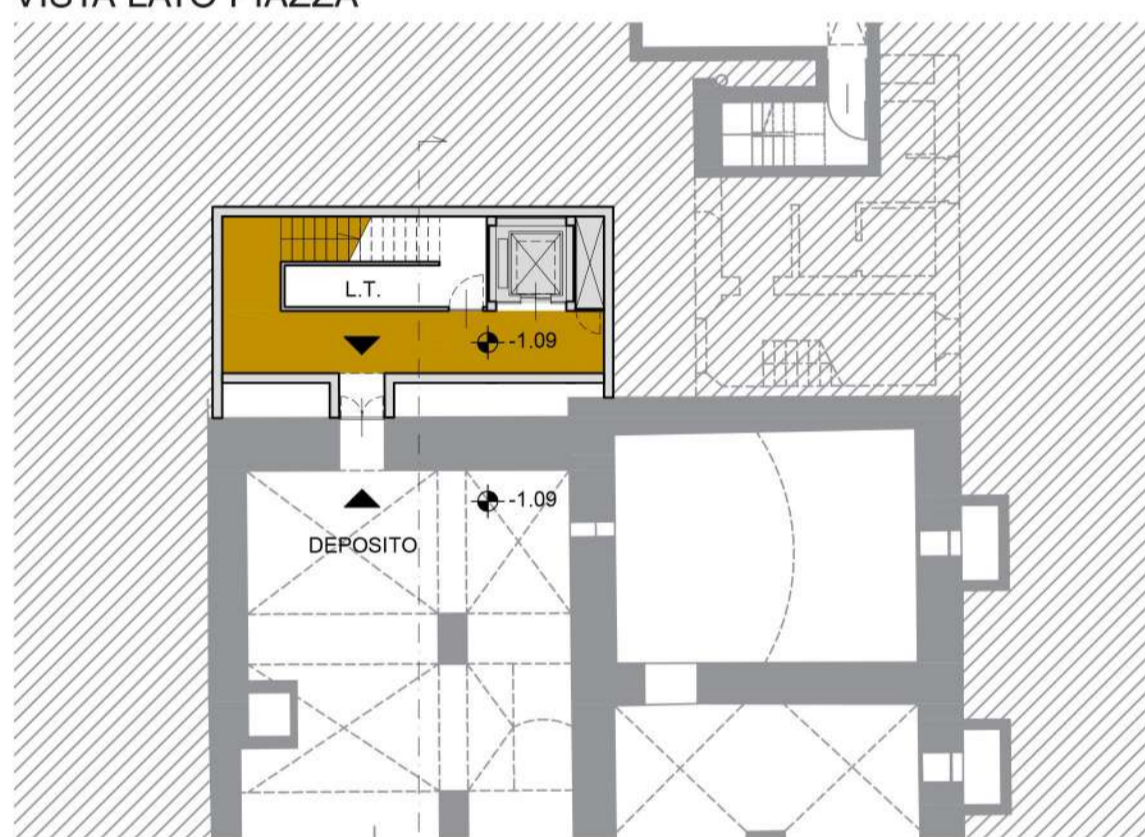
VISTA NOTTURNA A VOLO D'UCCELLO



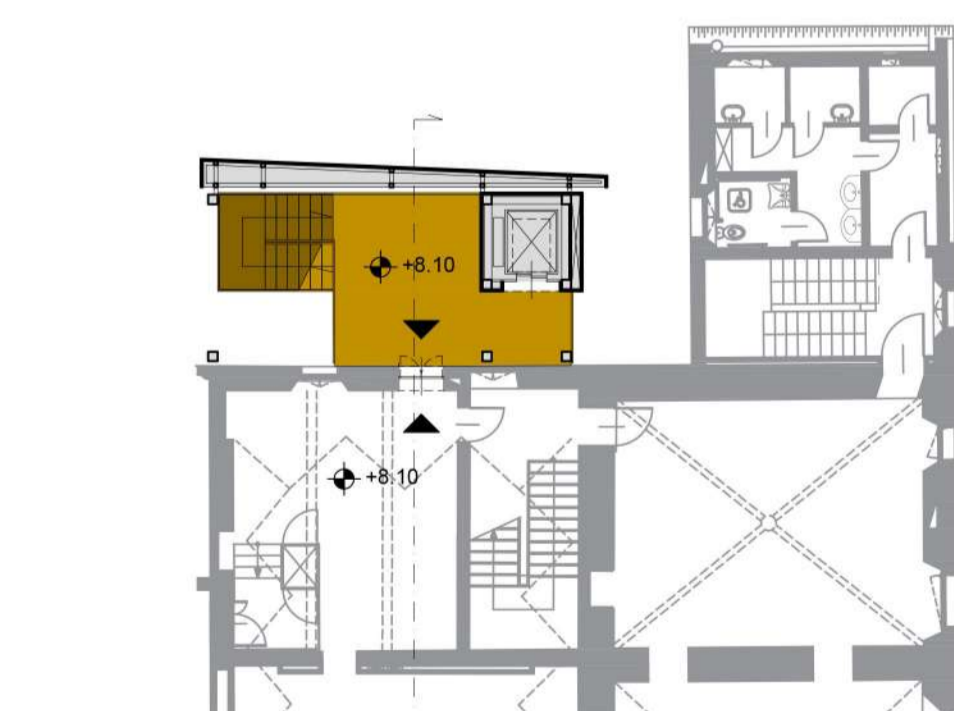
PROSPETTO EST_ SCALA 1:100



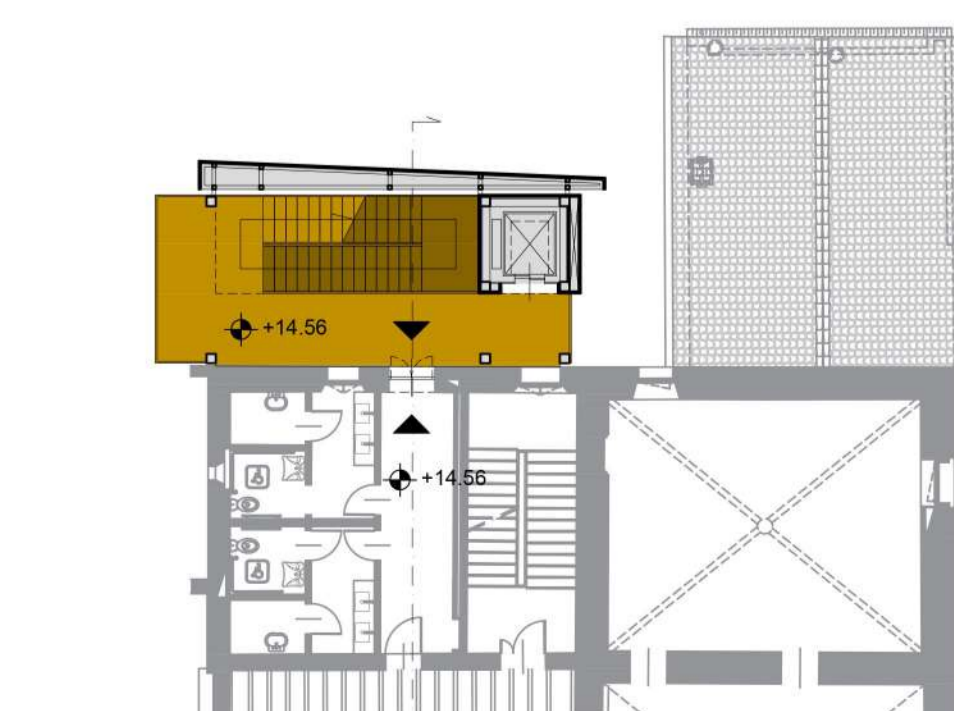
VISTA LATO PIAZZA



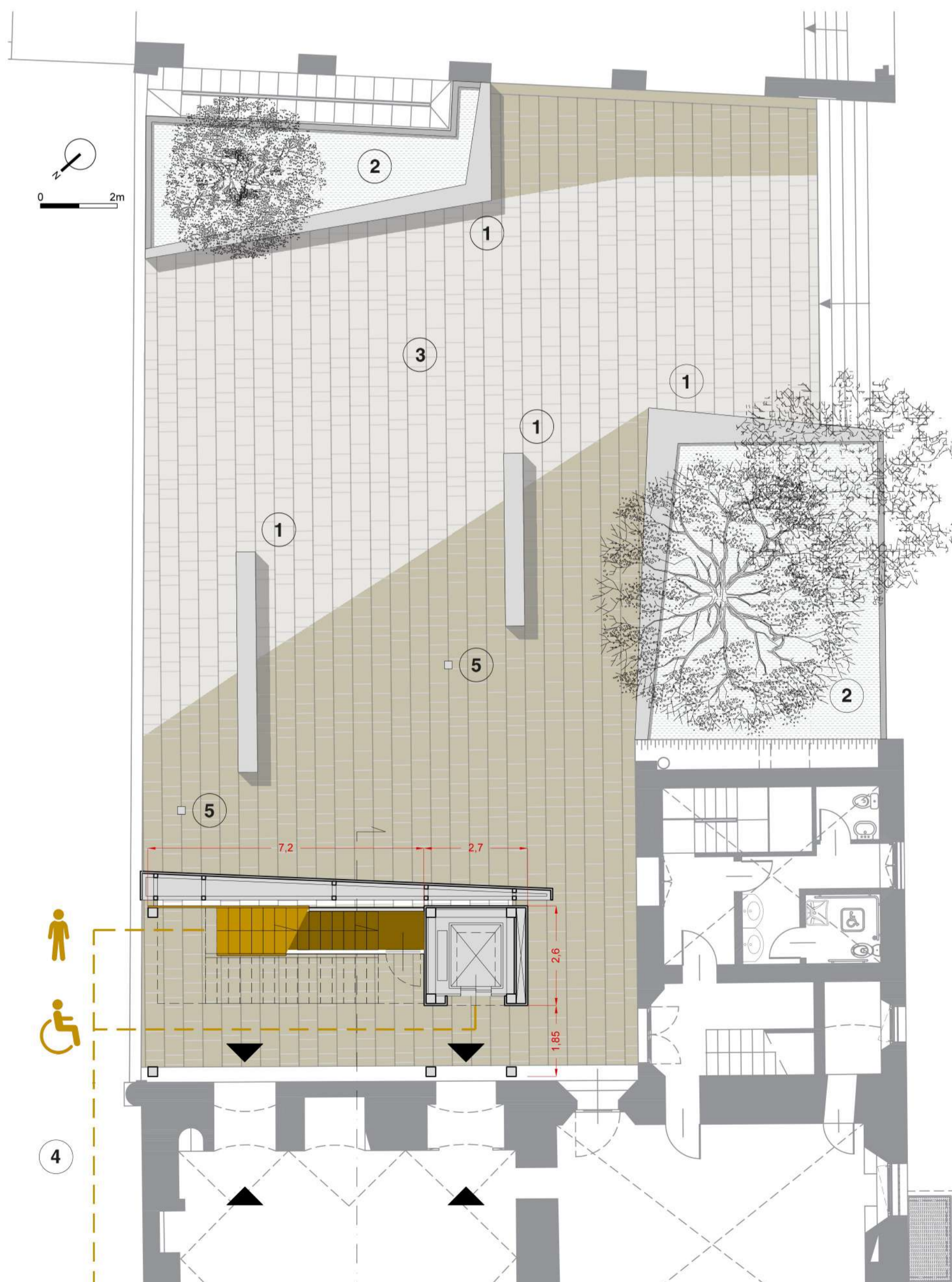
PIANTA PIANO INTERRATO_SCALA 1:200



PIANTA PIANO PRIMO_SCALA 1:200



PIANTA PIANO SECONDO_SCALA 1:200



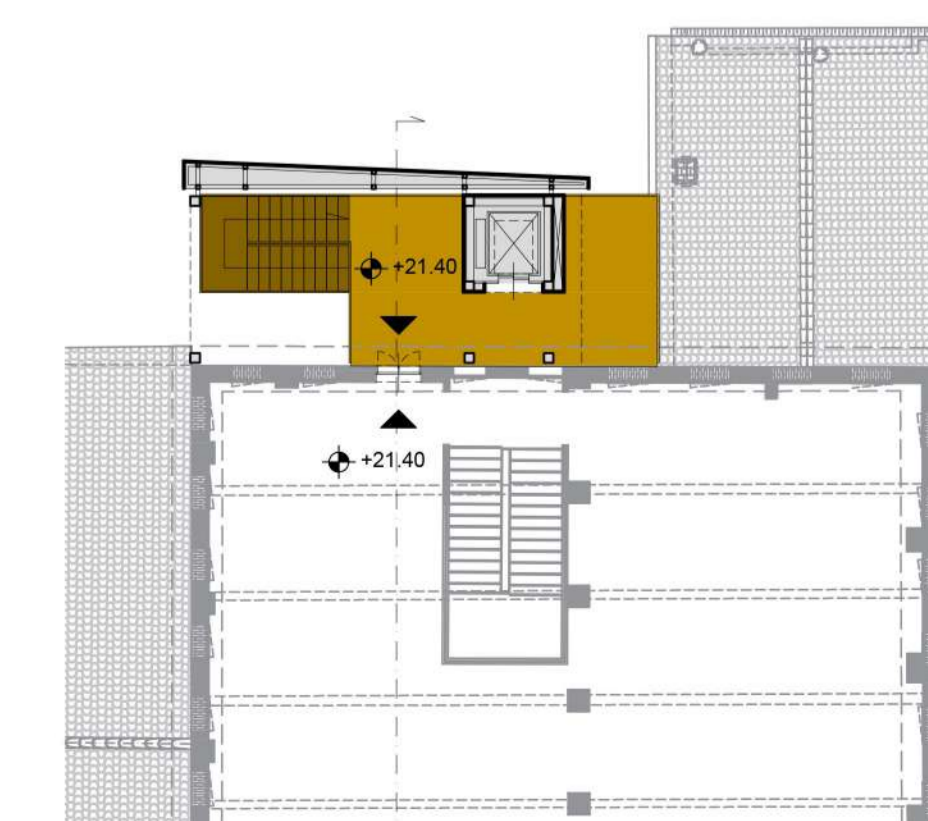
PIANTA PIANO TERRA E PIAZZA_SCALA 1:100



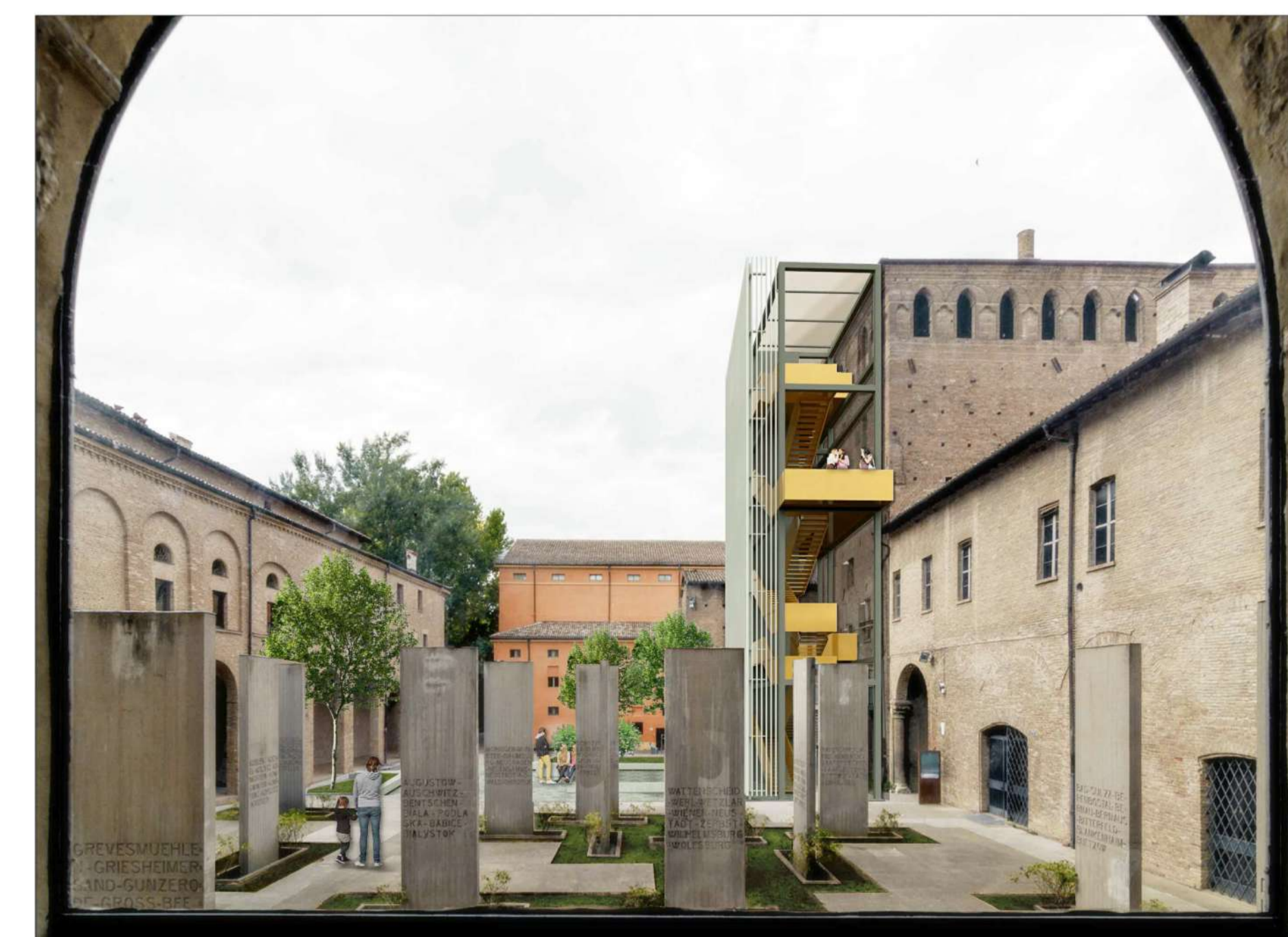
SEZIONE TRASVERSALE_SCALA 1:100

ALLESTIMENTO PIAZZA

- 1. Sedute monolitiche
- 2. Nuove aree verdi alberate
- 3. Pavimentazione lapidea bicroma
- 4. Percorsi di accesso Torrione
- 5. Illuminazione esterna



PIANTA PIANO TERZO_SCALA 1:200



VISTA DAL CORTILE DELLE STELE